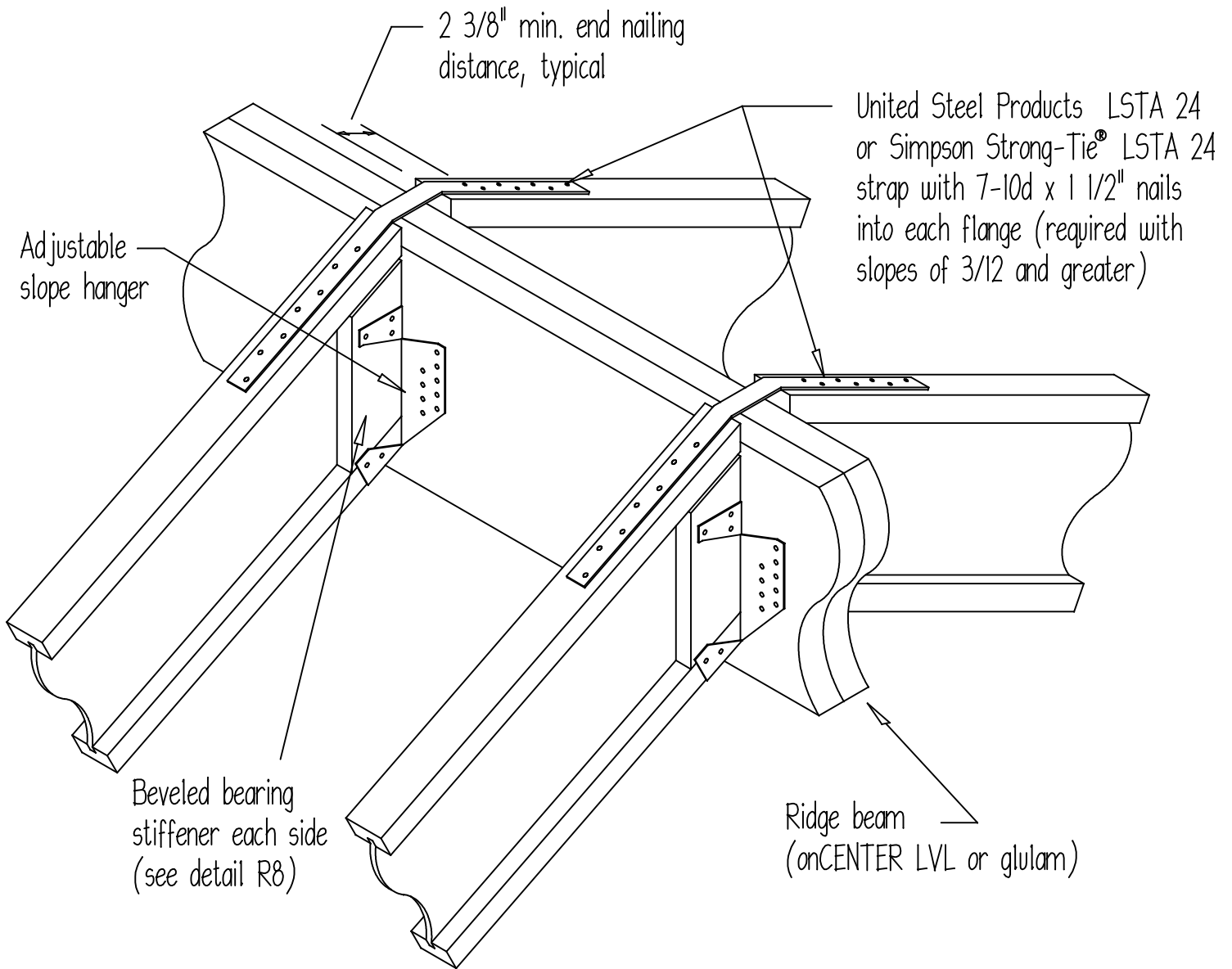




# RIDGE-JOIST CONNECTION

12/12 maximum slope



Additional uplift connections may be required.



# JOISTS ABOVE RIDGE SUPPORT BEAM

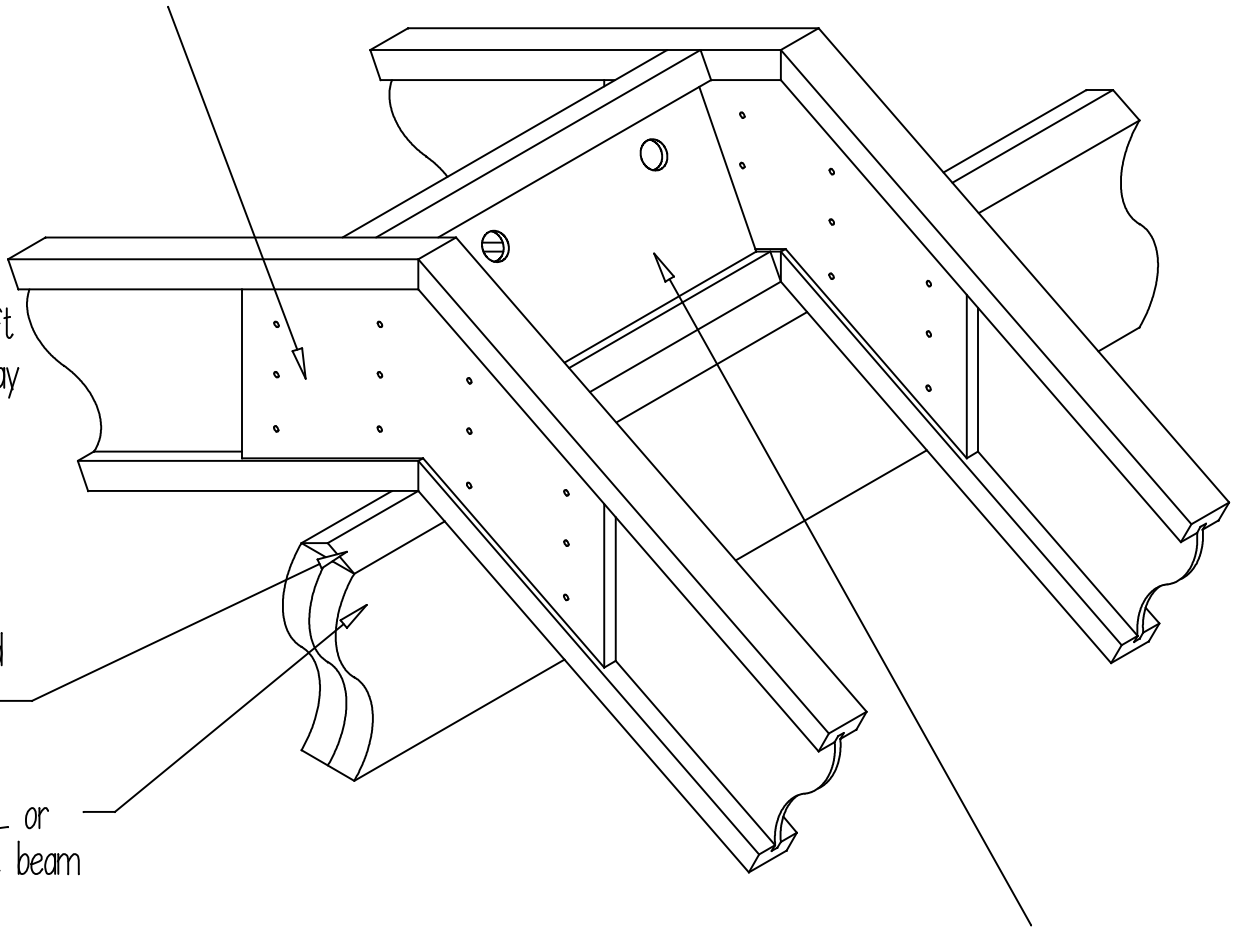
12/12 maximum slope

23/32" x 2'-0" 48/24 APA Rated Sheathing gussett (strength axis horizontal) each side with 12-8d nails clinched or strap with 16-10d x 1 1/2" nails applied to top flange per detail R1.

Attach to bearing plate per detail F1. Additional uplift connections may be required.

Double beveled bearing plate

onCENTER LVL or glulam support beam



For BLI joist blocking panel shear transfer, use same nailing as required for sheathing, but complying with Installation Note 5 of the onCENTER Specifier's Guide. For rim board shear transfer, see APA EWS Y250.

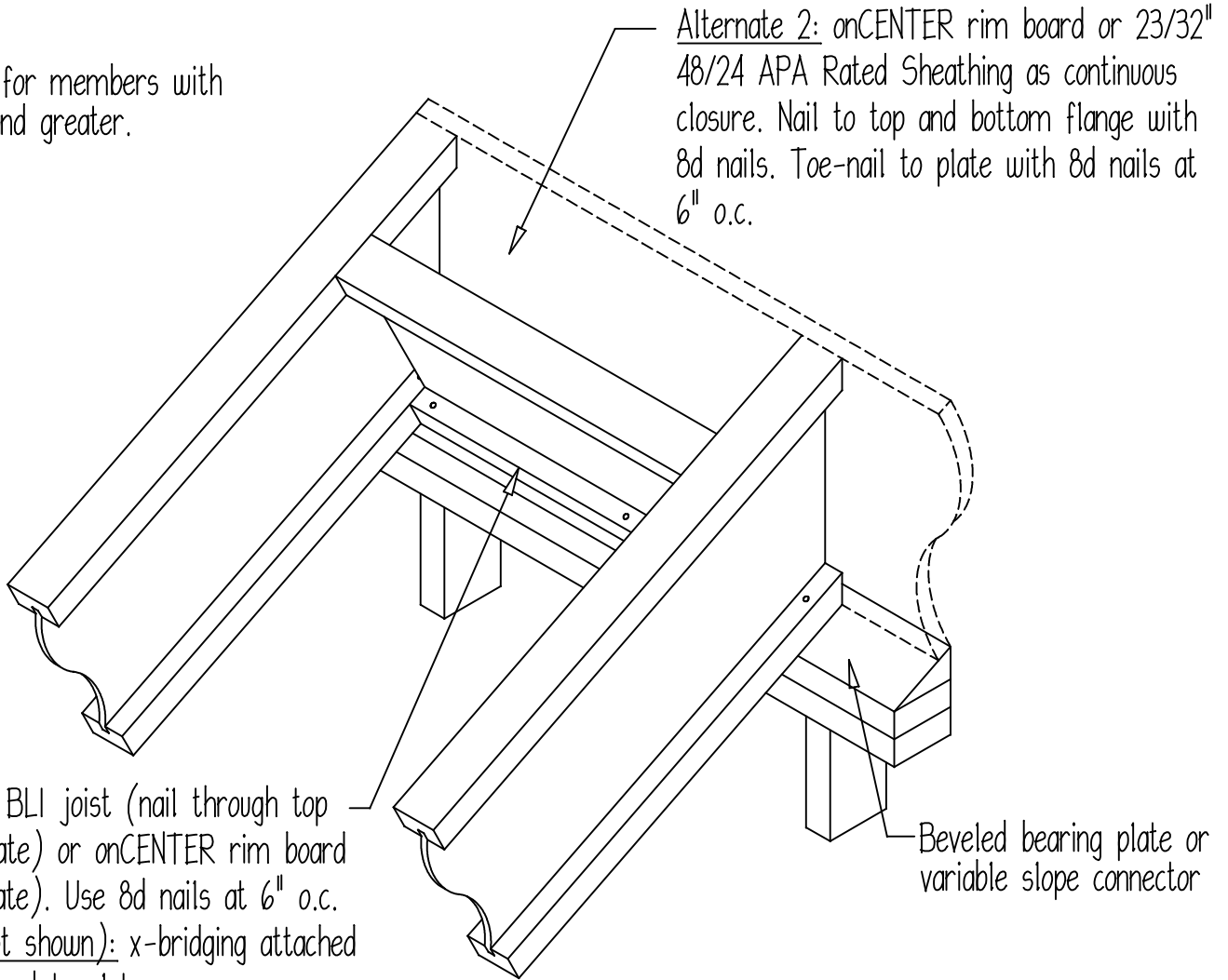
Blocking panel: BLI joist (nail through top of flange to plate) or onCENTER rim board (toe-nail to plate). Use 8d nails at 6" o.c. Alternate (not shown): x-bridging attached to top flanges and to plate.

R3

# UPPER END, BEARING ON WALL

12/12 maximum slope

Strap required for members with slope of 3/12 and greater.



Blocking panel: BLI joist (nail through top of flange to plate) or onCENTER rim board (toe-nail to plate). Use 8d nails at 6" o.c.

Alternate 1 (not shown): x-bridging attached to top flanges and to plate.

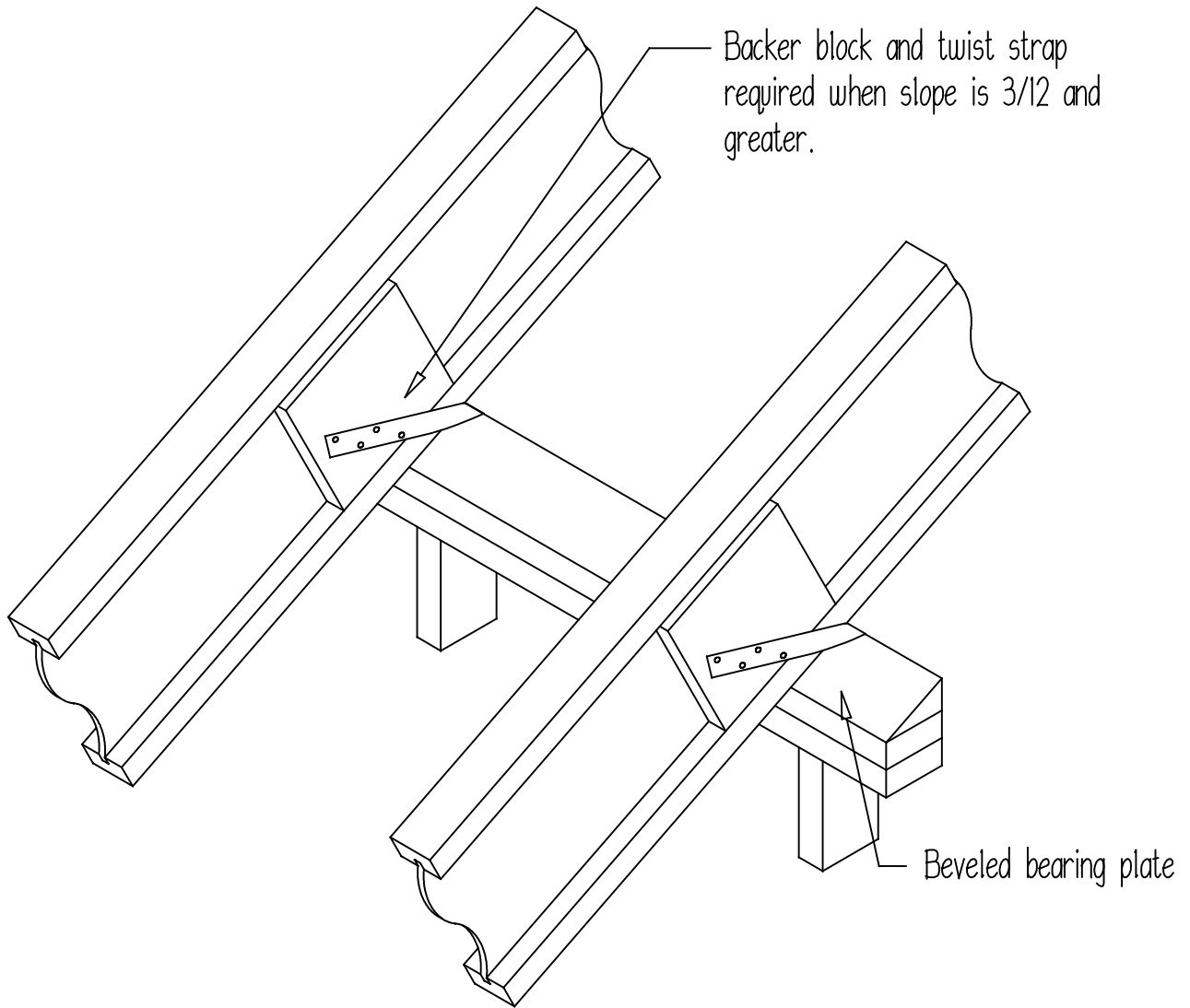
Attach to bearing plate per detail F1.  
Additional uplift connections may be required.

For BLI joist blocking panel shear transfer, use same nailing as required for sheathing, but complying with Installation Note 5 of the onCENTER Specifier's Guide. For rim board or continuous closure shear transfer, see APA EWS Y250.

R4

# INTERMEDIATE BEARING

12/12 maximum slope



Attach to bearing plate per detail F1.  
Additional uplift connections may be required.

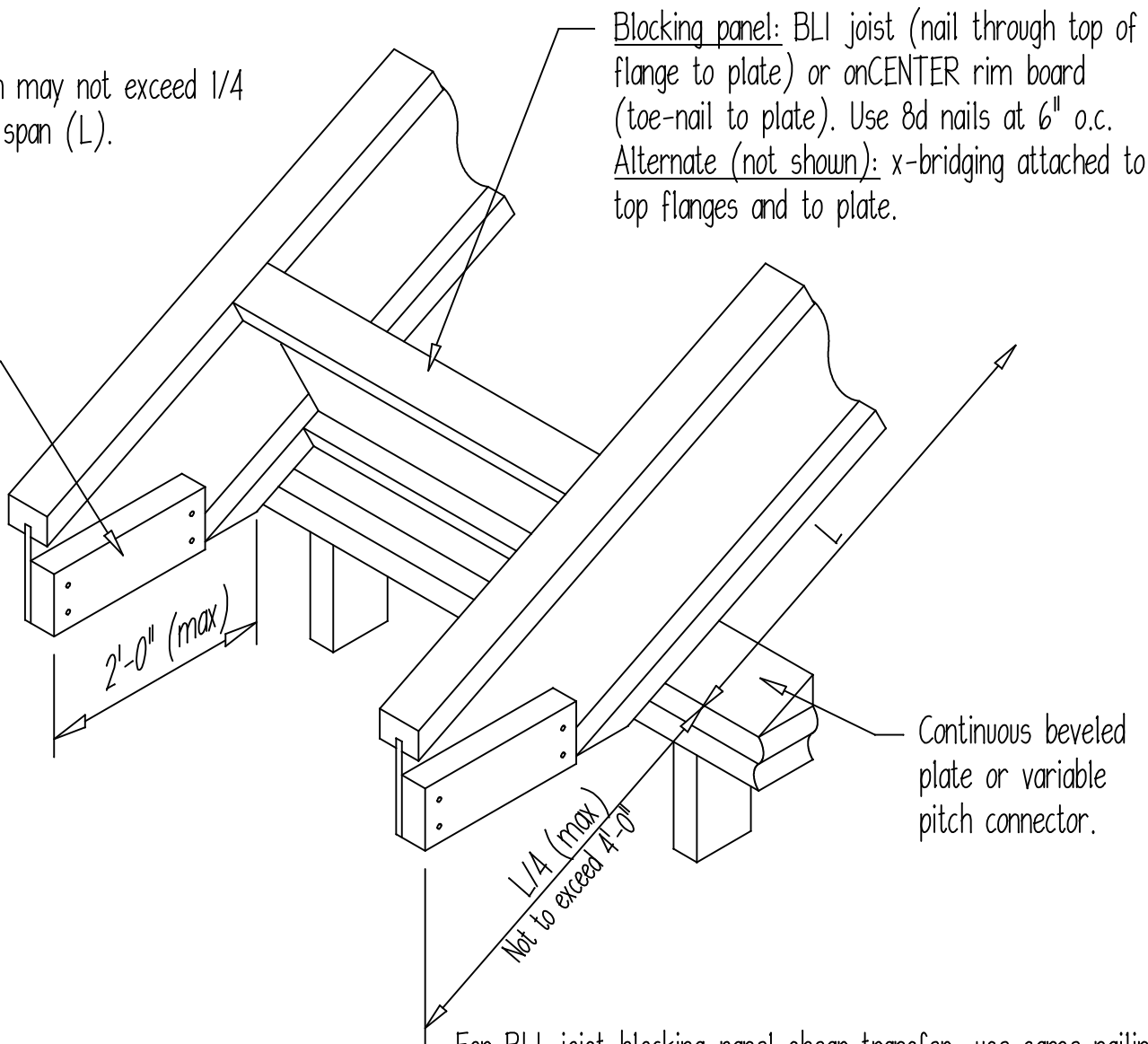
R5

# JOISTS ON BEVELED PLATE

12/12 maximum slope

Cantilever length may not exceed 1/4 of the adjacent span (L).

2x4 block to attach fascia



Attach to bearing plate per detail F1. Additional uplift connections may be required.

For BLI joist blocking panel shear transfer, use same nailing as required for sheathing, but complying with Installation Note 5 of the onCENTER Specifier's Guide. For rim board shear transfer, see APA EWS Y250.

R6

# BIRDSMOUTH CUT

Low end of joist only  
12/12 maximum slope

Blocking panel: BLI joist (for low-sloped roofs only) (nail through top of flange to plate) or onCENTER rim board (toe-nail to plate). Use 8d nails at 6" o.c.  
Alternate (not shown): x-bridging attached to top flanges and to plate.

Bearing stiffener each side (See detail R8)

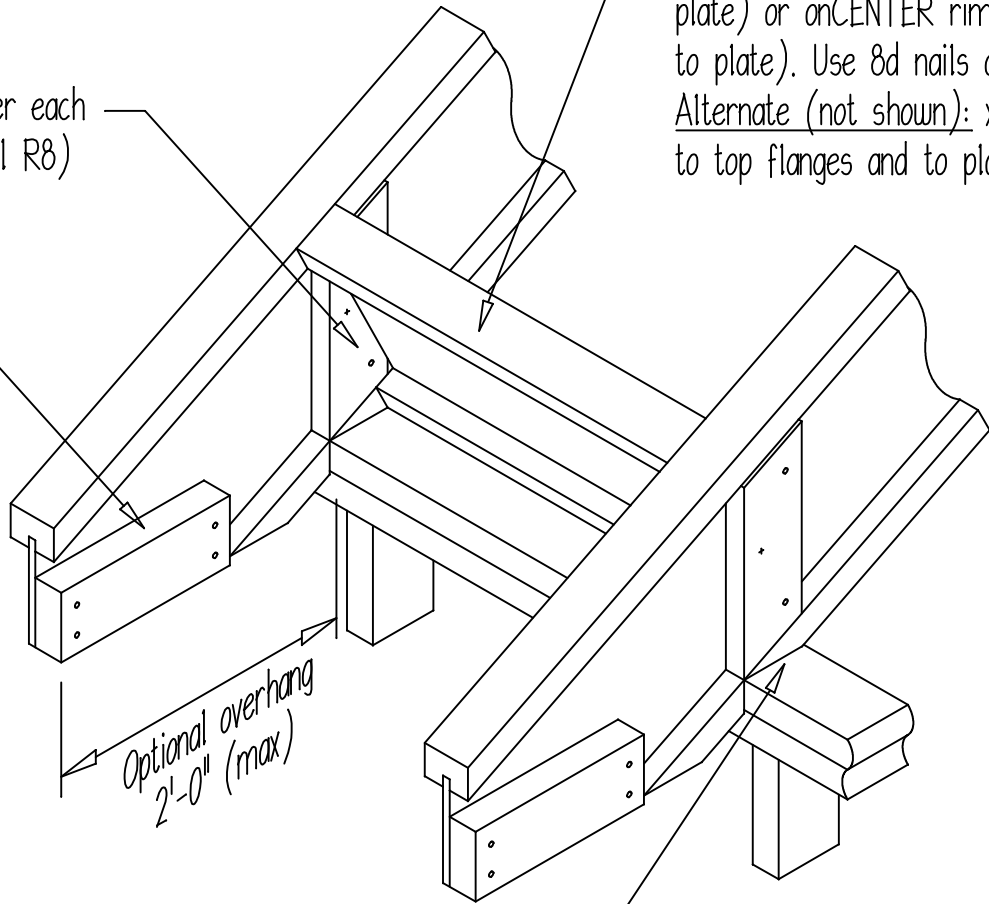
2x4 block to attach fascia

Optional overhang  
2'-0" (max)

Notch BLI joist to provide full bearing for bottom flange

Attach to bearing plate per detail F1. Additional uplift connections may be required.

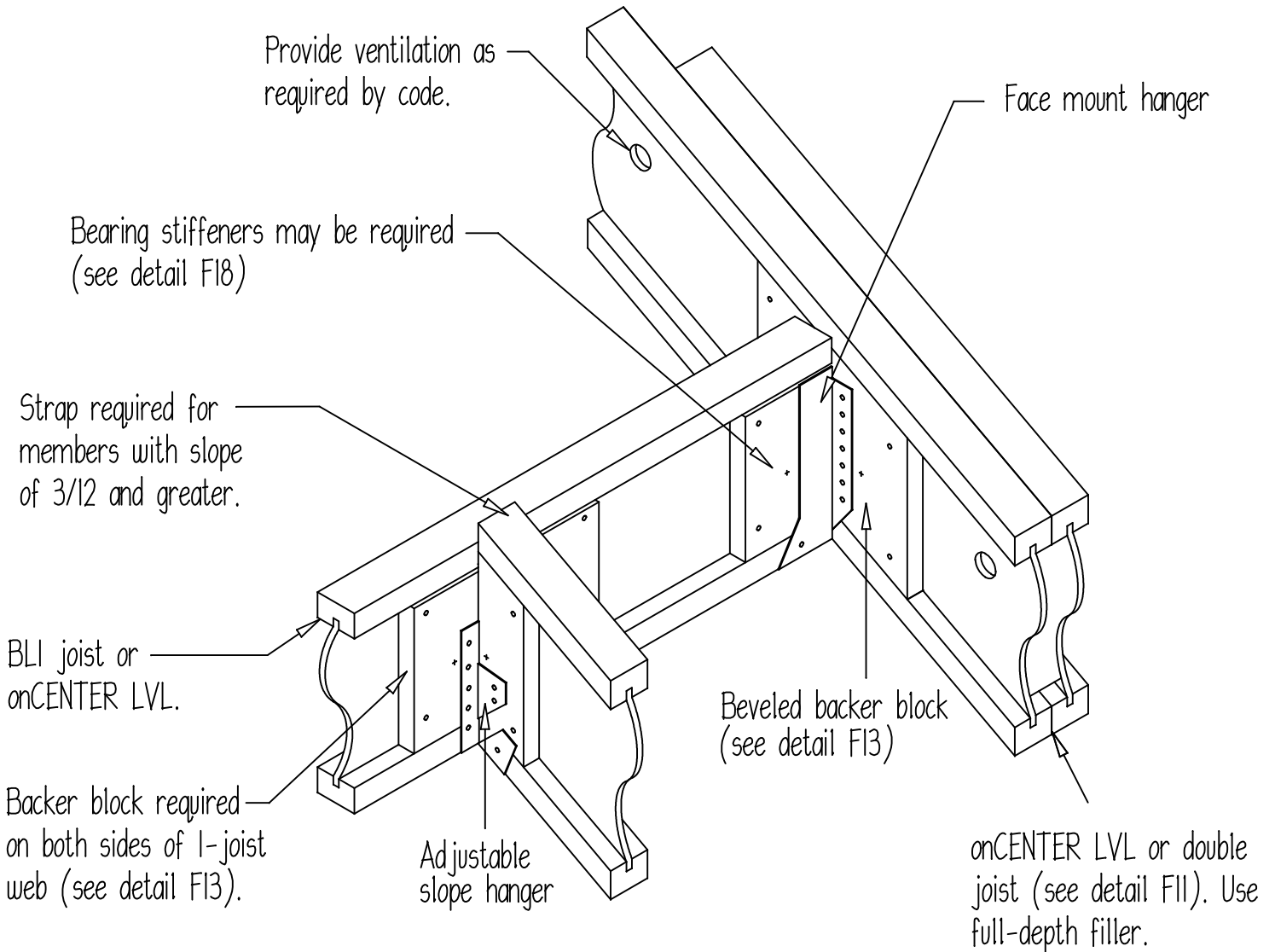
For BLI joist blocking panel shear transfer, use same nailing as required for sheathing, but complying with Installation Note 5 of the onCENTER Specifier's Guide. For rim board shear transfer, see APA EWS Y250.



R7

# ROOF OPENING, FACE MOUNT HANGERS

12/12 maximum slope

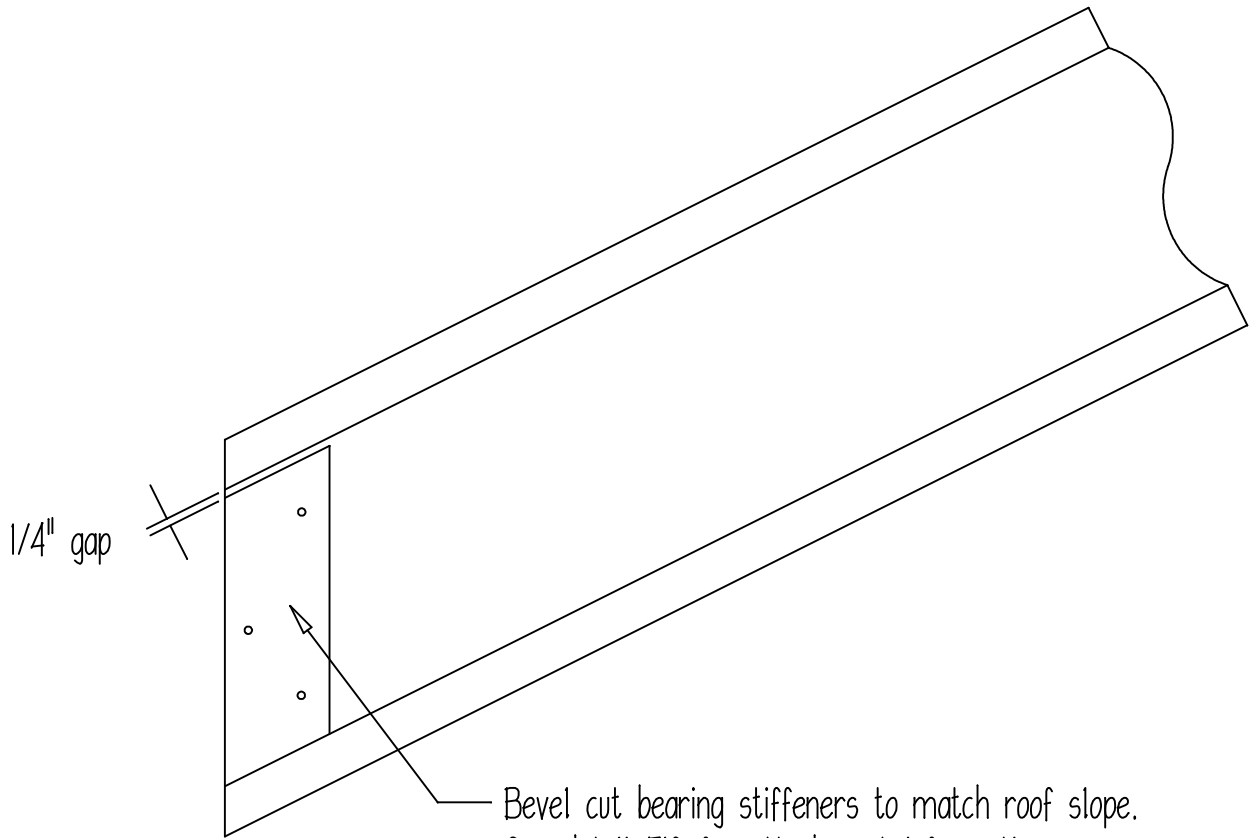


Additional uplift connection may be required.

R8

# BEVELED BEARING STIFFENER

12/12 maximum slope



1/4" gap

Bevel cut bearing stiffeners to match roof slope.  
See detail F18 for attachment information.





# OPTIONAL OVERHANG EXTENSIONS

12/12 maximum slope

May be used with detail R5 and R6 (low end only)

A

Locate top edge of 2x4 1 1/2" down from top of joist. Attach to joist web with 2 rows of 8d nails at 8" o.c. clinched.

Fasten 2x4 flange extension to 2x4 support with 8d nails at 8" o.c.

Attach to bearing plate per detail F1. Additional uplift connections may be required.

Bearing stiffener each side (see detail R8)

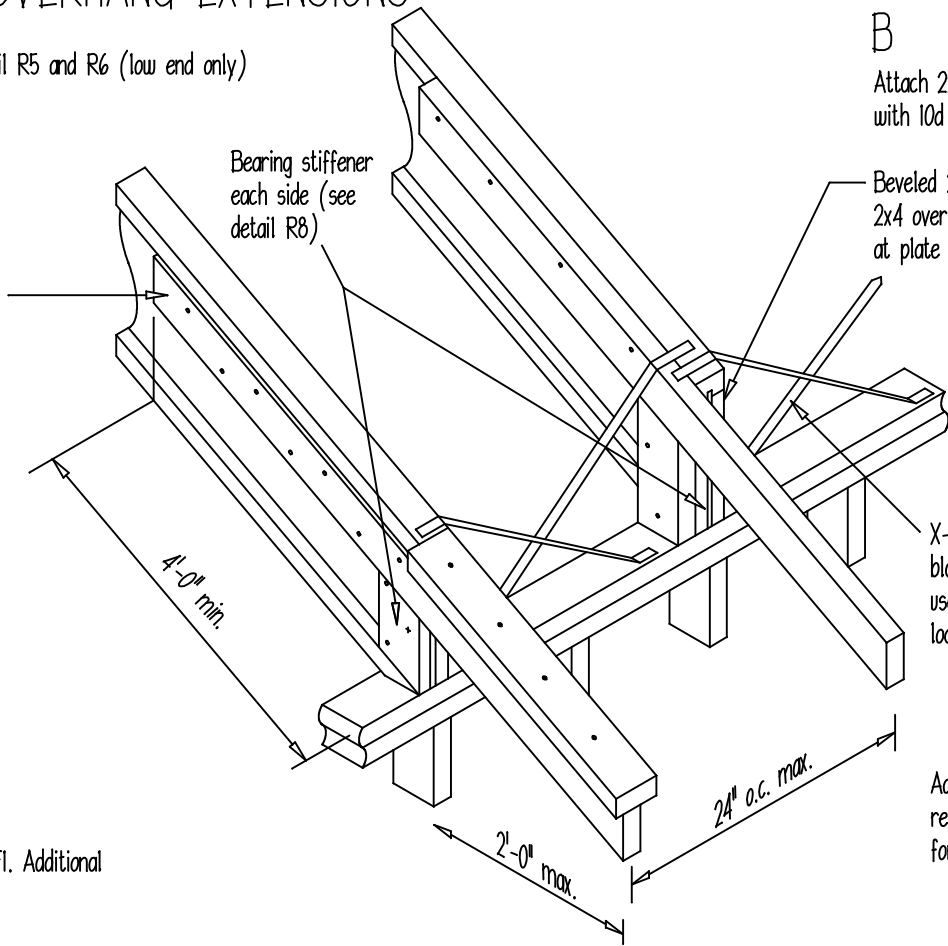
B

Attach 2x4 to side of top flange with 10d nails at 8" o.c.

Beveled 2x4 cripple at plate, under 2x4 overhang. Attach with 8d nail at plate and at stiffener.

X-bridging or BLI joist blocking panels. Validate use of x-bridging with local code.

Additional blocking or restraint may be required for shear transfer





# OVERHANG PARALLEL TO JOIST

12/12 maximum slope

When L exceeds joist spacing, double joist may be required.

Blocking at wall not shown for clarity

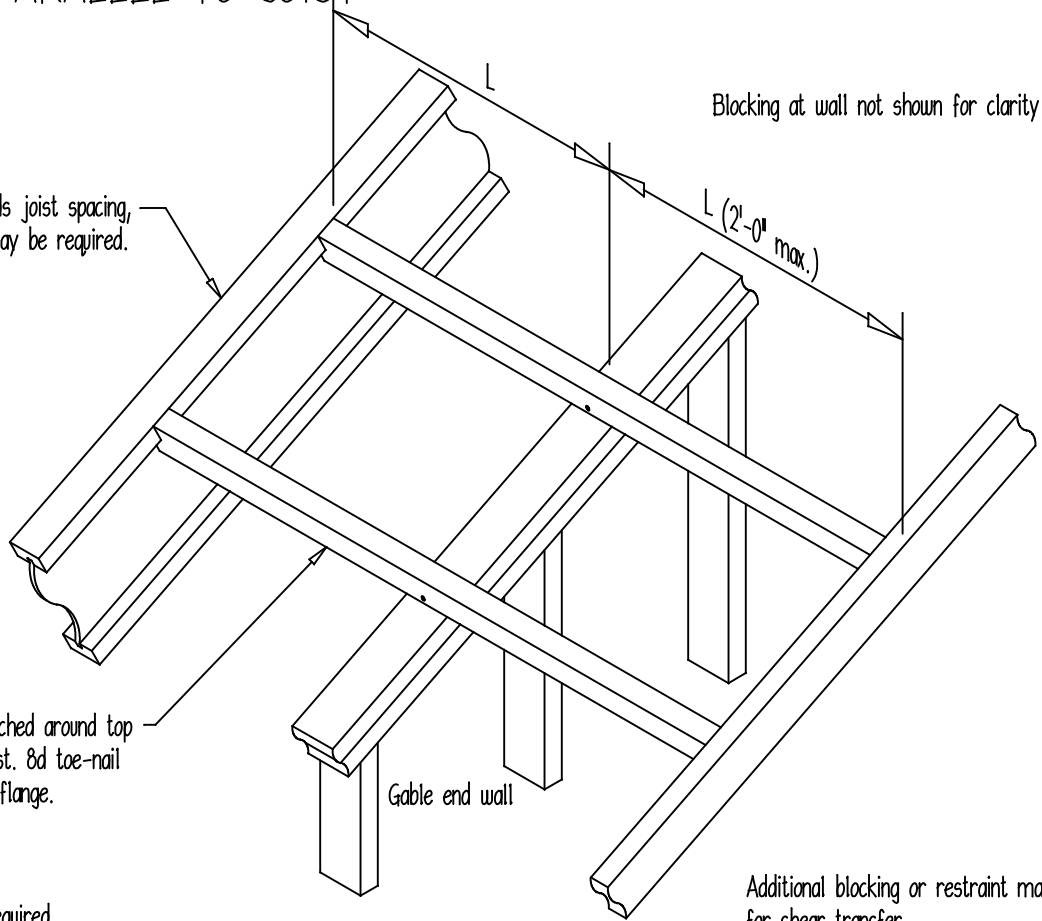
L (2'-0" max.)

2x4 outrigger notched around top flange of BLI joist. 8d toe-nail to plate and top flange.

Gable end wall

Additional blocking or restraint may be required for shear transfer.

Additional uplift connections may be required.



R11 ROOF BLOCKING WITH PERMITTED VENTILATION

