



Aluminum Plank Siding

A COMPLETE CONCEALED FASTENER SYSTEM



The Marketing of Your Home Starts With the Exterior

FastPlank™ is an inexpensive way to draw attention to your home, make an impression, and demonstrate the quality and care that you put into your projects. New customers will be drawn to your home because of the beauty that you have affordably added to your exterior.

FastPlank™ is a fully concealed fastener system that creates a rainscreen air cavity to protect your structure from water infiltration and reduce heat transfer.

Our **FastPlank™** Clip System incorporates the most up to date building science technology, allowing you to give your customer the very best exterior available, while respecting your construction budget.

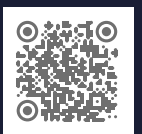
Protect and increase the value of your brand for years to come and partner with us today.

Start by contacting your local Engage Building Product rep.

Now Available at

BlueLinX

AMERICA'S BUILDING PRODUCTS DISTRIBUTOR





Time is Money

We respect your business; we respect your time.

Our contractors and installers are what make the **FastPlank™** aluminum cladding system look beautiful on their customers' homes.

The thoughtful design behind this complete system ensures that you can install quickly and make money.

The **FastPlank™ Clip & Slide™** attachment clips quickly secure the planks to the wall every 16 to 32 inches. Our 16' foot planks are durable and lightweight for easy handling, plus our extruded aluminum profiles cut easily (and dust-free!) with a non-ferrous carbide blade.

Try **FastPlank™** to see for yourself how quick and easy it is to install. This system can make money for your business.

Contact your local Engage Building Materials representative to set up installation training and free **FastPlank™** job estimation.

How To

Elevate your building's aesthetics by following these five easy-to-follow steps:

STEP 1

Level and attach the starter trim to the base of the wall.



STEP 2

Attach the vertical backplates.



STEP 3

Snap and clip your planks into place.

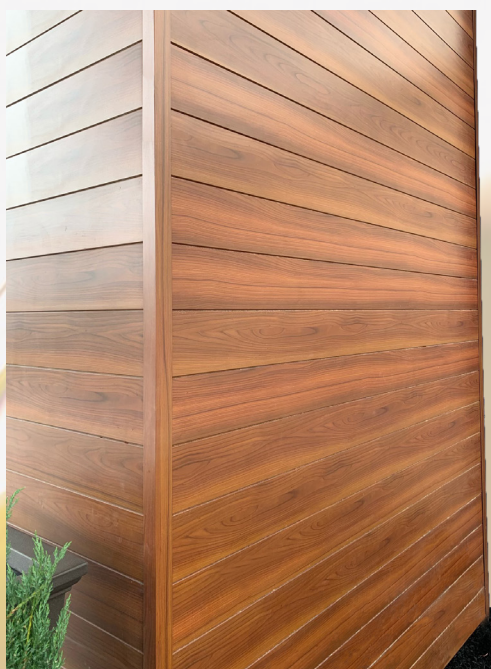


Contact your local BlueLinX representative to get your project started today

Innovative Installation

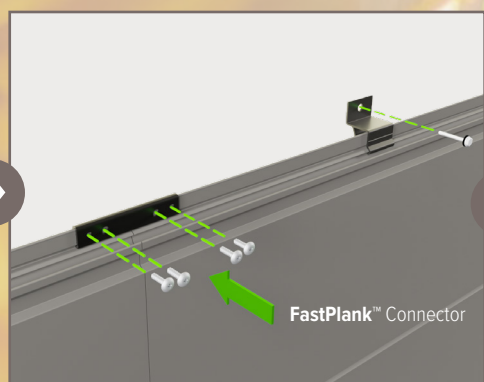
FastPlank™ Systems incorporates an innovative “Snap & Slide” clip system that streamlines installation, prevents gapping and buckling, and ensures long-term appeal and functionality of the building product.

- ✔ **Non Combustible**
- ✔ **Hail / Impact Resistant**



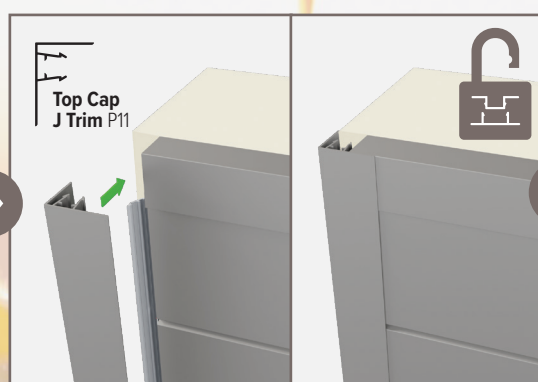
STEP 4

Slide clips and screw into wall every 32 inches.



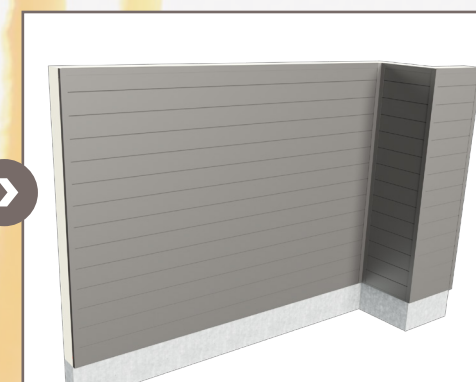
STEP 5

Snap and lock your top caps into place.



YOU'RE DONE!

Admire your stunning new wall.



Modern. Affordable. Durable.®

- ✔ Complimentary Color Samples
- ✔ No obligation, Free Estimates
- ✔ Personalized Local Support
- ✔ Installation Support and Training
- ✔ Locally Stocked
- ✔ Mock-up Material Available at No Charge



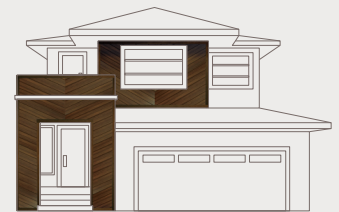
Dark Cherry

Dark Fir

Light Cherry

Knotty Pine

Dark Walnut



✔ Backed by 50-year product and 15-year finish warranties, **FastPlank™** Systems is North America's premier choice for aluminum cladding systems.

Comprehensive customer support throughout North America. Our team of industry professionals is equipped to assist you—regardless of location.



[Samples](#) | [Estimates](#) | [Resources](#) | [Information](#)

BlueLinx
800-839-2588

Contact your local BlueLinx representative to get your project started today