

ACM PRODUCT CATALOG

"For All Your Metal Needs"



AMERICAN CONSTRUCTION METALS

Roofing Accessories
Tampa, FL





AMERICAN CONSTRUCTION METALS

THE ACM STORIES

ACM Beloit

American Construction Metals (ACM) opened its doors in 2002 and has been serving the U.S. building industry ever since. ACM produces a wide array of metal building materials including metal roofing, trim coil, edge metal, gutter systems, and a variety of other metal accessories. From the beginning, ACM has prided itself on its commitment to delivering the best possible product, on time and within budget. ACM's fleet of trucks guarantees consistent and on-time delivery from the production line to the job site. Always keeping the builder in mind, ACM has simplified the ordering process, and special packaging eliminates damage concerns and protects each piece during transit. ACM's commitment to quality is reinforced by a countless number of outstanding installations and the builders who use their products everyday.

ACM Houston

Since 1946, ACM Houston (formerly Stone Metal Products) has focused on producing the highest quality building products and providing excellent customer service. Located in Houston, Texas, the company serves a growing number of distributors throughout Texas, Oklahoma, Louisiana, Arkansas, and New Mexico. Roofing and ventilation products, along with special order custom fabrications, are delivered weekly to distributors through ACM Houston's route truck delivery system. The company's metal roofing systems can be found on homes, churches, light commercial, and agricultural buildings across the Southwest.

ACM Lodi

ACM Lodi (formerly Roof Top Metal Products) was opened in 1991, covering the Northern California market. In 2008, they opened a facility in Riverside to service the Southern California market. ACM Lodi is a family owned and operated company whose employees have been with the facility since the day it opened. The company achieved the highest quality metal roofing products and rainware materials through the loyalty of the employees. The excellent workmanship and care of the employees will continue onward as they have come aboard to form the new ACM Lodi.

ACM Tampa

ACM Tampa got its start in 1968, under various "Ashley" titles throughout the years until 2008, when they joined the ACM team. Located in the "Sunshine State" (Florida) and servicing the Southeast with top quality building products and storm protection, the company's products can be found on both residential and commercial buildings throughout the Southeast. ACM Tampa has its own fleet of trucks and dedicated drivers, ensuring on-time delivery for its distributions. As our product line offering continues to grow, ACM Tampa stays focused on Customer Satisfaction as their primary goal, and "Safety" as their top priority.

Roofing Accessories		ROOFING ACCESSORIES
Angle Flashing	2	
Drip Edge	2-3	
Gravel Stop	3	
Gutter Apron 25°, Stucco Stop, Stucco Stop w/Caulk Bead, Pre-Bent Step Flashing	4	
Rain Diverter, Philly Flashing, Roll Valley, W-Valley	5	
Roof to Wall Flashing, Flat Sheet	6	
Trim Coil		TRIM COIL
Embossed, Variform	7	
Soffit, Fascia & Accessories		SOFFIT, FASCIA & ACCESSORIES
4", 6", 7-1/2", 8" & 10" Fascia, 12" Soffit	8	
16" Soffit, J Channel , F Channel	9	
Siding Accessories		SIDING ACCESSORIES
Starter Strip	10	
Vents		VENTS
Goose Neck, Roof Jacks	11	
Tile Accessories		TILE ACCESSORIES
Tile W-Valley, Tile Ridge Cap Riser, Trim Lock Ridge Channel, Trim Lock Plus Ridge Channel, Tile Wall Flashing	12	
Eave Closures	13-15	
Awnings		AWNINGS
24" - 76" Lengths	16-31	
Patio Accessories		PATIO ACCESSORIES
Kick Plate Channel, Finish Trim	32	

**Some products might have longer lead times. Please check with your ACM Customer Service Representative.*

Contact Information:

ACM Beloit
1600 Park Avenue
Beloit, WI 53511
608-365-0296 phone
608-365-0493 fax

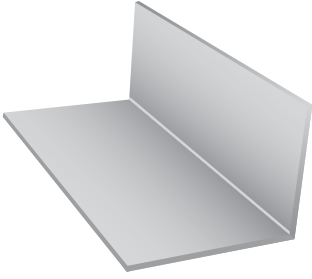
ACM Houston
11615 Brittmoore Park Drive
Houston, TX 77041
713-466-1797 phone
713-466-5404 fax

ACM Lodi
1307 E. Pine Street
Lodi, CA 95241
209-334-1489 phone
209-334-4589 fax

ACM Tampa
5140 West Clifton Street
Tampa, FL 33634
813-884-0444 phone
813-881-1738 fax
608-364-5092 e-fax

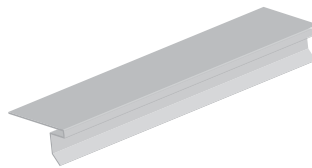


Angle Flashing



Part #	Description	Colors	Gauge/ Thickness	Piece Length	Pieces/ Box	Pieces/ Bundle	Boxes/ Pallet	Pieces/ Pallet
No Kick (Color Outside)								
ABFA141TWH	Aluminum 1 x 4	WH	0.040	10'		25	20	500
ABFA231TWH	Aluminum 2 x 3	WH	0.040	10'		25	20	500
AAF4410 - -	Aluminum 4 x 4	WH/BR	0.025	10'		20	20	400
AAF4410ML	Aluminum 4 x 4	Mill	0.025	10'		20	20	400
AAF4510 - -	Aluminum 4 x 5	WH/BR	0.025	10'		20	20	400
AAF4510ML	Aluminum 4 x 5	Mill	0.025	10'		20	20	400
AAF5510 - -	Aluminum 5 x 5	WH/BR	0.025	10'		20	20	400
AAF5510ML	Aluminum 5 x 5	Mill	0.025	10'		20	20	400
AAFH5510ML	Aluminum 5 x 5 with Hem	Mill	0.025	10'		20	20	400
AAF32551ML	Aluminum 5 x 5	Mill	0.032	10'		20	20	400
LJMD783GL	Galvalume J-Mold 26 ga 7/8 x 3	Mill	26 ga/0.019	10'		25	20	500
LLMD13GL	Galvalume L-Mold 26 ga 1 x 3	Mill	26 ga/0.019	10'		25	20	500
LRKN13GL	Galvalume No Kick 1 x 3	Mill	26 ga/0.019	10'		25	20	500
LAF3210 - -	Galvalume 3 x 2	WH/BR/BK	26 ga/0.019	10'		20	20	400
LAF3210 GL	Galvalume 3 x 2	Mill	26 ga/0.019	10'		20	20	400
LAF3310 - -	Galvalume 3 x 3	WH/BR/BK	26 ga/0.019	10'		20	20	400
LAF3310GL	Galvalume 3 x 3	Mill	26 ga/0.019	10'		20	20	400
LAF4310 - -	Galvalume 4 x 3	WH/BR/BK	26 ga/0.019	10'		20	20	400
LAF4310GL	Galvalume 4 x 3	Mill	26 ga/0.019	10'		20	20	400
LAF4410 - -	Galvalume 4 x 4	WH/BR/BK	26 ga/0.019	10'		20	20	400
LAF4410GL	Galvalume 4 x 4	Mill	26 ga/0.019	10'		20	20	400
LAF4510 - -	Galvalume 4 x 5	WH/BR/BK	26 ga/0.019	10'		20	20	400
LAF4510GL	Galvalume 4 x 5	Mill	26 ga/0.019	10'		20	20	400
LAF4610 - -	Galvalume 4 x 6	WH/BR/BK	26 ga/0.019	10'		20	20	400
LAF4610GL	Galvalume 4 x 6	Mill	26 ga/0.019	10'		20	20	400
LAF5510 - -	Galvalume 5 x 5	WH/BR/BK	26 ga/0.019	10'		20	20	400
LAF5510GL	Galvalume 5 x 5	Mill	26 ga/0.019	10'		20	20	400
LAF5710 - -	Galvalume 5 x 7	WH/BR/BK	26 ga/0.019	10'		20	20	400
LAF5710GL	Galvalume 5 x 7	Mill	26 ga/0.019	10'		20	20	400
CPAF4510	Copper Plus 4 x 5	Copper Plus	0.016	10'	Order by the pc.			
CPAF5710	Copper Plus 5 x 7	Copper Plus	0.016	10'	Order by the pc.			

Drip Edge



Part #	Description	Colors	Gauge/ Thickness	Piece Length	Pieces/ Box	Boxes/ Pallet	Pieces/ Pallet
Professional 2-1/4" Back on Roof with 3/4" Overhang							
ADE15 - -	Aluminum 1-1/2" face	WH/BR/BK/BE/GY	0.025	10'	50	24	1200
ADE175 - -	Aluminum 1-3/4" face	WH/BR/BK/BE/GY	0.025	10'	25	20	500
ADE25 - -	Aluminum 2-1/2" face	WH/BR/BK/BE/GY	0.025	10'	25	20	500
Professional 2-1/4" Back on Roof with 1/2" Overhang							
LDE25	Galvalume 26 Ga 2-1/2" face	WH/BR/BK/BE/GY	26 ga/0.019	10'	25	20	500
LDE20	Galvalume 26 Ga 2" face	WH/BR/BK/BE/GY	26 ga/0.019	10'	25	20	500
LDE15	Galvalume 26 Ga 1-1/2" face	WH/BR/BK/BE/GY	26 ga/0.019	10'	25	20	500
TDE25WH	TPO 24GA 2-1/2" face	WH	24 ga/0.024	10'	Order by the pc.		
CPDE25	Copper Plus 2-1/2" face	Copper Plus	0.016	10'	Order by the pc.		
CPDE20	Copper Plus 2" face	Copper Plus	0.016	10'	Order by the pc.		
CPDE15	Copper Plus 1-1/2" face	Copper Plus	0.016	10'	Order by the pc.		

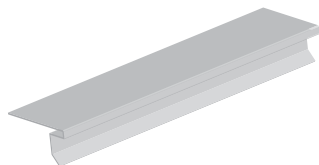
STEEL Roofing Accessories Colors:

COLOR	CODE	COLOR	CODE	COLOR	CODE	COLOR	CODE	COLOR	CODE
BEIGE	BE	BLACK	BK	BROWN	BR	GREY	GY	WHITE	WH

ALUMINUM Roofing Accessories Colors:

COLOR	CODE	COLOR	CODE	COLOR	CODE	COLOR	CODE	COLOR	CODE
ALMOND	AL	BONE	BN	CHARCOAL GREY	CG	HICKORY BROWN	HY	WHITE	WH
ANTIQUÉ IVORY	AI	BROWNSTONE	BO	COLONIAL GREY	CO	MUSKET BROWN	MB		

Drip Edge cont.

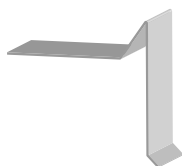


Part #	Description	Colors	Gauge/ Thickness	Piece Length	Pieces/ Box	Boxes/ Pallet	Pieces/ Pallet
Professional 2-3/4" Back on Roof with 1/4" Overhang							
LDEEL22 - -	Galvalume 26 Gauge 2-1/2" face (Extended Leg)	WH/BR/BK/BE/GY	26 ga/0.019	10'	25	20	500
LDEEL20 - -	Galvalume 26 Gauge 2" face (Extended Leg)	WH/BR/BK/BE/GY	26 ga/0.019	10'	25	20	500
LDEEL15 - -	Galvalume 26 Gauge 1-1/2" face (Extended Leg)	WH/BR/BK/BE/GY	26 ga/0.019	10'	25	20	500

Part #	Description	Colors	Gauge/ Thickness	Piece Length	Pieces/ Box	Pieces/ Bundle	Boxes/ Pallet	Pieces/ Pallet
Roof Edge - 90° with a kick								
LRE22 - -	Galvalume 26 Gauge 2 x 2	WH/BR/BK/BE/GY	26 ga/0.019	10'		25	20	500
LRE22ML	Galvalume 26 Gauge 2 x 2	Mill	26 ga/0.019	10'		25	20	500
LRE23 - -	Galvalume 26 Gauge 2 x 3	WH/BR/BK/BE/GY	26 ga/0.019	10'		25	20	500
LRE23ML	Galvalume 26 Gauge 2 x 3	Mill	26 ga/0.019	10'		25	20	500
LRE33 - -	Galvalume 26 Gauge 3 x 3	WH/BR/BK/BE/GY	26 ga/0.019	10'		25	20	500
LRE33ML	Galvalume 26 Gauge 3 x 3	Mill	26 ga/0.019	10'		25	20	500
LRE2444 - -	Galvalume 24 Gauge 4 x 4	WH/BR/BK/BE/GY	24 ga/0.024	10'		25	20	500
LRE2444ML	Galvalume 24 Gauge 4 x 4	Mill	24 ga/0.024	10'		25	20	500
LRE43 - -	Galvalume 26 Gauge 4 x 3	WH/BR/BK/BE/GY	26 ga/0.019	10'		25	20	500
LRE43ML	Galvalume 26 Gauge 4 x 3	Mill	26 ga/0.019	10'		25	20	500
CPRE22	Copper Plus 2 x 2	Copper Plus	0.016	10'	Order by the pc.			
CPRE33	Copper Plus 3 x 3	Copper Plus	0.016	10'	Order by the pc.			

Part #	Description	Colors	Gauge/ Thickness	Piece Length	Pieces/ Box	Boxes/ Pallet	Pieces/ Pallet
Builders Aluminum 2-1/4" Back on Roof - 1/4" Overhang							
ADEWB17TWH	Aluminum 1-3/4" face wood grain with hem	WH	0.014	10'	50	24	1200
ADEB17TWH	Aluminum 1-3/4" face with hem	WH	0.014	10'	50	24	1200
Commercial Aluminum 2-1/8" Back on Roof - 1/4" Overhang							
ADEWC17T - -	Aluminum 1-3/4" face wood grain with hem	(Listed Below)	0.018	10'	50	24	1200
ADEC17T - -	Aluminum 1-3/4" face with hem	(Listed Below)	0.018	10'	50	24	1200
ADEWC20T - -	Aluminum 2" face wood grain with hem	(Listed Below)	0.018	10'	50	24	1200
ADEC20T - -	Aluminum 2" face with hem	(Listed Below)	0.018	10'	50	24	1200
ADEWC25T - -	Aluminum 2-1/2" face wood grain with hem	WH/MB/HY/AL	0.018	10'	50	24	1200
ADEC25T - -	Aluminum 2-1/2" face with hem	WH/MB/HY	0.018	10'	50	24	1200
Premium Aluminum 2-1/8" Back on Roof - 1/4" Overhang							
ADEWD17T - -	Aluminum 1-3/4" face wood grain with hem	WH	0.024	10'	50	24	1200
ADED17T - -	Aluminum 1-3/4" face with hem	WH	0.024	10'	50	24	1200
ADEWD20T - -	Aluminum 2" face wood grain with hem	(Listed Below)	0.024	10'	50	24	1200
ADED20T - -	Aluminum 2" face with hem	WH	0.024	10'	50	24	1200
ADED25T - -	Aluminum 2-1/2" face with hem	WH	0.024	10'	50	24	1200

Gravel Stop



Part #	Description	Colors	Gauge/ Thickness	Piece Length	Pieces/ Box	Pieces/ Bundle
LGSO30 - -	Galvalume 3" face Open	WH/BR	26 ga/0.019	10'		25
LGSO30ML	Galvalume 3" face Open	Mill	26 ga/0.019	10'		25
LGSC30 - -	Galvalume 3" face Closed	WH/BR	26 ga/0.019	10'		25
LGSC30ML	Galvalume 3" face Closed	Mill	26 ga/0.019	10'		25
CPGSO30	Copper Plus 3" face Open	Copper Plus	0.016	10'	Order by the pc.	
CPGSC30	Copper Plus 3" face Closed	Copper Plus	0.016	10'	Order by the pc.	

STEEL Roofing Accessories Colors:

COLOR	CODE	COLOR	CODE	COLOR	CODE	COLOR	CODE	COLOR	CODE
BEIGE	BE	BLACK	BK	BROWN	BR	GREY	GY	WHITE	WH

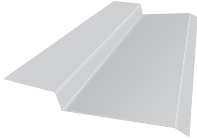
ALUMINUM Roofing Accessories Colors:

COLOR	CODE	COLOR	CODE	COLOR	CODE	COLOR	CODE	COLOR	CODE
ALMOND	AL	BONE	BN	CHARCOAL GREY	CG	HICKORY BROWN	HY	WHITE	WH
ANTIQUÉ IVORY	AI	BROWNSTONE	BO	COLONIAL GREY	CO	MUSKET BROWN	MB		

Gutter Apron 25° Part #		Description	Colors	Gauge/Thickness	Piece Length	Pieces/Box	Pieces/Bundle	Boxes/Pallet	Pieces/Pallet
LGA20115 - -		Galvalume 2" face 115°	WH/BR/BK	26 ga/0.019	10'		25	20	500
LGA20115ML		Galvalume 2" face 115°	Mill	26 ga/0.019	10'		25	20	500
LGA30115 - -		Galvalume 3" face 115°	WH/BR/BK	26 ga/0.019	10'		25	20	500
LGA30115ML		Galvalume 3" face 115°	Mill	26 ga/0.019	10'		25	20	500
LGA20110 - -		Galvalume 2" face 110°	WH/BR/BK	26 ga/0.019	10'		25	20	500
LGA20110ML		Galvalume 2" face 110°	Mill	26 ga/0.019	10'		25	20	500
LGA23110 - -		Galvalume 2" face 110° with 3" Leg on Roof	WH/BR/BK	26 ga/0.019	10'		25	20	500
LGA23110ML		Galvalume 2" face 110° with 3" Leg on Roof	Mill	26 ga/0.019	10'		25	20	500
LGA30110 - -		Galvalume 3" face 110°	WH/BR/BK	26 ga/0.019	10'		25	20	500
LGA30110ML		Galvalume 3" face 110°	Mill	26 ga/0.019	10'		25	20	500
CPGA23110		Copper Plus 3" face 110°	Copper Plus	0.016	10'	Order by the pc.			
CPGA20115		Copper Plus 2" face 115°	Copper Plus	0.016	10'	Order by the pc.			
CPGA30115		Copper Plus 3" face 115°	Copper Plus	0.016	10'	Order by the pc.			
CPGA20110		Copper Plus 2" face 110°	Copper Plus	0.016	10'	Order by the pc.			
CPGA23110		Copper Plus 2" face 110° w/3" Leg on Roof	Copper Plus	0.016	10'	Order by the pc.			



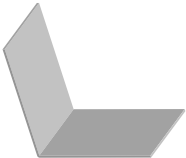
Stucco Stop Part #		Description	Colors	Gauge/Thickness	Piece Length	Pieces/Box	Pieces/Bundle	Boxes/Pallet	Pieces/Pallet
LOF5ML		Galvalume 5"	Mill	26 ga/0.019	10'		25	20	500
LOF55ML		Galvalume 5-1/2"	Mill	26 ga/0.019	10'		25	20	500
LOF6ML		Galvalume 6"	Mill	26 ga/0.019	10'		25	20	500
CPOF5		Copper Plus 5"	Copper Plus	0.016	10'	Order by the pc.			
CPOF55		Copper Plus 5-1/2"	Copper Plus	0.016	10'	Order by the pc.			
CPOF6		Copper Plus 6"	Copper Plus	0.016	10'	Order by the pc.			



Stucco Stop with Caulk Bead Part #		Description	Colors	Gauge/Thickness	Piece Length	Pieces/Box	Pieces/Bundle	Boxes/Pallet	Pieces/Pallet
AOFB5ML		Aluminum 5"	Mill	0.032	10'		25	20	500
LOFB5ML		Galvalume 5"	Mill	26 ga/0.019	10'		25	20	500
LOFB55ML		Galvalume 5-1/2"	Mill	26 ga/0.019	10'		25	20	500
LOFB6ML		Galvalume 6"	Mill	26 ga/0.019	10'		25	20	500
CPOFB5		Copper Plus 5"	Copper Plus	0.016	10'	Order by the pc.			
CPOFB55		Copper Plus 5-1/2"	Copper Plus	0.016	10'	Order by the pc.			
CPOFB6		Copper Plus 6"	Copper Plus	0.016	10'	Order by the pc.			



Pre-Bent Step Flashing Part #		Description	Colors	Gauge/Thickness	Pieces Length	Pieces/Bundle
LPSF57ML		Galvalume Prebent Step 5 x 5 x 7	Mill	26 ga/0.019	7"	50



STEEL Roofing Accessories Colors:

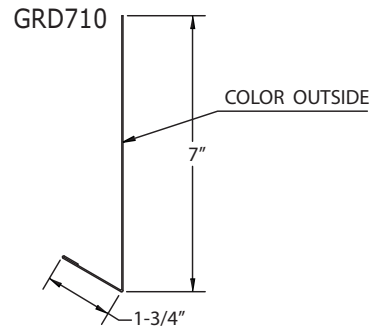
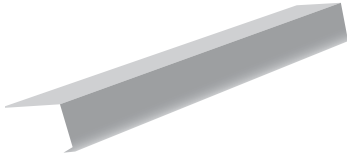
COLOR	CODE	COLOR	CODE	COLOR	CODE	COLOR	CODE	COLOR	CODE
BEIGE	BE	BLACK	BK	BROWN	BR	GREY	GY	WHITE	WH

ALUMINUM Roofing Accessories Colors:

COLOR	CODE	COLOR	CODE	COLOR	CODE	COLOR	CODE	COLOR	CODE
ALMOND	AL	BONE BROWNSTONE	BN	CHARCOAL GREY	CG	HICKORY BROWN	HY	WHITE	WH
ANTIQUÉ IVORY	AI		BO	COLONIAL GREY	CO	MUSKET BROWN	MB		

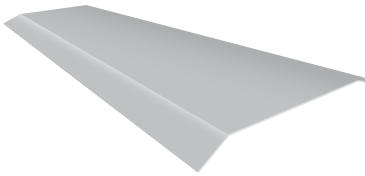
Rain Diverter

Part #	Description	Colors	Gauge/Thickness	Piece Length	Pieces/Bundle	Boxes/Pallet	Pieces/Pallet
GRD710ML	Galvanized 7"	Mill	24 ga	10'	10	25	250



Philly Flashing

Part #	Description	Colors	Gauge/Thickness	Piece Length	Pieces/Box	Pieces/Bundle	Boxes/Pallet	Pieces/Pallet
LPHF310ML	Galvalume 3"	Mill	26 ga/0.019	10'		20	20	400
LPHF410ML	Galvalume 4"	Mill	26 ga/0.019	10'		20	20	400
CPPHF310	Copper Plus 3"	Copper Plus	0.016	10'	Order by the pc.			
CPPHF410	Copper Plus 4"	Copper Plus	0.016	10'	Order by the pc.			

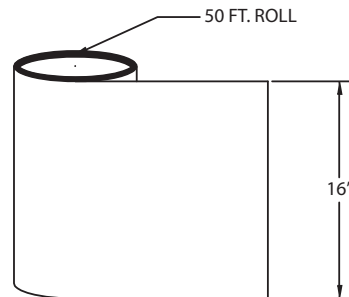


Roll Valley

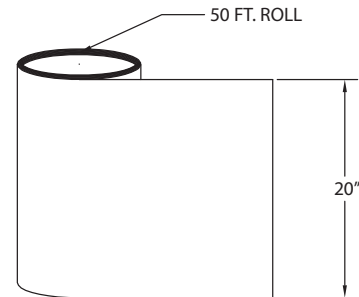
Part #	Description	Colors	Gauge/Thickness	Piece Length	Pieces/Box	Box/Pallet	Pieces/Pallet
GRV16ML	Galvanized 16"	Mill	30 ga	50'	1	25	25
GRV17165ML	Galvanized 16"	Mill	26 ga/0.019	50'	1	50	50
LRV17165ML	Galvalume 16"	Mill	26 ga/0.019	50'	1	50	50
GRV20ML	Galvanized 20"	Mill	30 ga	50'	1	25	25
GRV1720ML	Galvanized 20"	Mill	26 ga/0.019	50'	1	50	50
LRV1720ML	Galvalume 20"	Mill	26 ga/0.019	50'	1	50	50



GRV16ML



GRV20ML



W-Valley

Part #	Description	Colors	Gauge/Thickness	Piece Length	Pieces/Box	Pieces/Bundle	Pieces/Pallet
LSV18ML	Galvalume 18" W-Valley Shingle	Mill	26 ga/0.019	10'		25	50
LSVH18ML	Galvalume 18" W-Valley Shingle w/Hem	Mill	26 ga/0.019	10'		25	50
CPSV18	Copper Plus 18" W-Valley Shingle	Copper Plus	0.016	10'	Order by the pc.		
CPSVH18	Copper Plus 18" W-Valley Shingle w/Hem	Copper Plus	0.016	10'	Order by the pc.		



STEEL Roofing Accessories Colors:

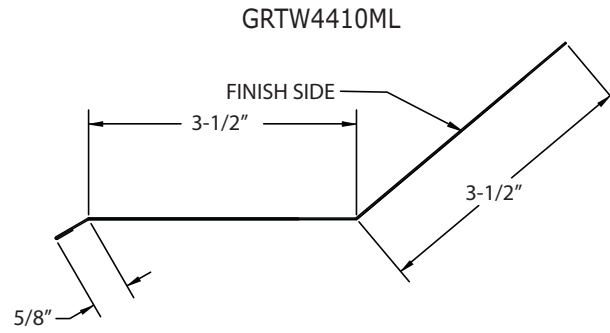
COLOR	CODE	COLOR	CODE	COLOR	CODE	COLOR	CODE	COLOR	CODE
BEIGE	BE	BLACK	BK	BROWN	BR	GREY	GY	WHITE	WH

ALUMINUM Roofing Accessories Colors:

COLOR	CODE	COLOR	CODE	COLOR	CODE	COLOR	CODE	COLOR	CODE
ALMOND	AL	BONE	BN	CHARCOAL GREY	CG	HICKORY BROWN	HY	WHITE	WH
ANTIQUÉ IVORY	AI	BROWNSTONE	BO	COLONIAL GREY	CO	MUSKET BROWN	MB		

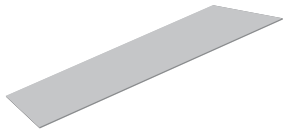
Roof to Wall Flashing

Part #	Description	Colors	Gauge/Thickness	Piece Length	Pieces/Bundle	Boxes/Pallet	Pieces/Pallet
GRTW4410ML	Galvalume 4 x 4	Mill	26 ga/0.019	10'	10	10	250



Flat Sheet

Part #	Description	Colors	Gauge/Thickness	Piece Length	Pieces/Box	Pieces/Pallet
LFS648GL	Galvalume 4' x 10'	Mill	26 ga/0.019	10'		100
LFS448GL	Galvalume 4' x 10'	Mill	24 ga/0.024	10'		100
CPFS162410	Copper Plus 2' x 10'	Copper Plus	0.016	10'	Order by the pc.	
CPFS1612	Copper Plus 12" x 12"	Copper Plus	0.016	12"	Order by the pc.	



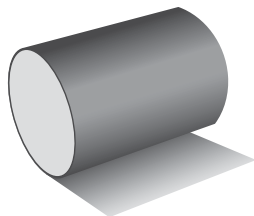
STEEL Roofing Accessories Colors:

COLOR	CODE	COLOR	CODE	COLOR	CODE	COLOR	CODE	COLOR	CODE
BEIGE	BE	BLACK	BK	BROWN	BR	GREY	GY	WHITE	WH

ALUMINUM Roofing Accessories Colors:

COLOR	CODE	COLOR	CODE	COLOR	CODE	COLOR	CODE	COLOR	CODE
ALMOND	AL	BONE	BN	CHARCOAL GREY	CG	HICKORY BROWN	HY	WHITE	WH
ANTIQUÉ IVORY	AI	BROWNSTONE	BO	COLONIAL GREY	CO	MUSKET BROWN	MB		

Embossed



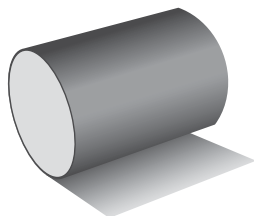
Part #	Description	Colors	Gauge/ Thickness	Piece Length	Pieces/ Box	Boxes/ Pallet	Pieces/ Pallet
ATCW14TWH	Aluminum 14" Embossed	WH	0.014	50'	1	18	18
ATCS14T - -	Aluminum 14" Smooth	WH/HY/MB	0.014	50'	1	18	18
ATCW24T - -	Aluminum 24" Embossed	WH/HY/MB/AL/CG/AI	0.019	50'	1	48	48
ATCS24TWH	Aluminum 24" Smooth	WH	0.019	50'	1	48	48
ATCP24WH	Aluminum 24" PVC	WH	0.019	50'	1	48	48
ATCP24V - -	Aluminum 24" PVC	(Listed Below)	0.019	50'	1	48	48

***Note: 1248 Rolls on a Truck**

Embossed Trim Coil Colors:

COLOR	CODE	COLOR	CODE	COLOR	CODE
ALMOND	AL	CHARCOAL GREY	CG	MUSKET BROWN	MB
ANTIQUÉ IVORY	AI	HICKORY BROWN	HY	WHITE	WH

Variform



Part #	Description	Colors	Gauge/ Thickness	Piece Length	Pieces/ Box	Boxes/ Pallet	Pieces/ Pallet
ATCP24V - -	Aluminum 24" PVC	(Listed Below)	0.019	50'	1	48	48

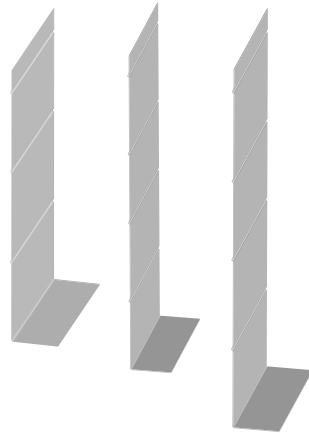
***Note: 1248 Rolls on a Truck**

Variform Trim Coil Comparable Colors:

COLOR	CODE	COLOR	CODE	COLOR	CODE	COLOR	CODE	COLOR	CODE
AUTUMN BEIGE	AB	GEORGIAN GRAY	GG	IRISH THISTLE	IT	SANDY TAN	ST	SILVER MIST	SM
CLASSIC CREAM	CC	GRAPHITE GRAY	GR	NATURAL ALMOND	NA	SAVANNAH BLUE	SV	STONE MOUNTAIN CLAY	SC
DELRAY SAND	DE	ISLAND PEARL	IP						

TRIM COIL

Fascia



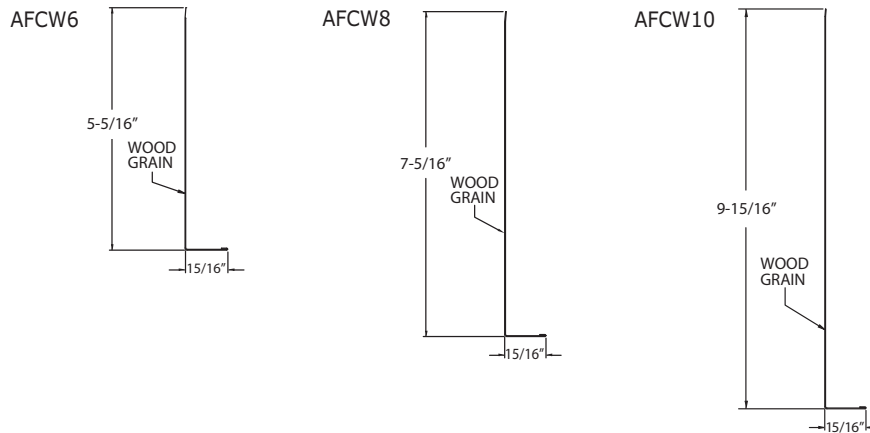
Part #	Description	Colors	Gauge/Thickness	Piece Length	Pieces/Box	Boxes/Pallet	Pieces/Pallet
4" Fascia							
AFCNRD4TWH	Aluminum 4" Deluxe No Rib	WH	0.024	12'	25	42	1050
AFCSB4TWH	Aluminum 4" Builders Ribbed	WH	0.016	12'	25	42	1050
AFCSC4T - -	Aluminum 4" Commercial Ribbed	(Listed Below)	0.019	12'	25	42	1050
AFCSD4T - -	Aluminum 4" Deluxe Ribbed	(Listed Below)	0.024	12'	25	42	1050
AFCWB4TWH	Aluminum 4" Builders Wood Grain	WH	0.016	12'	25	42	1050
AFCWC4T - -	Aluminum 4" Commercial Wood Grain	(Listed Below)	0.019	12'	25	42	1050
AFCWD4T - -	Aluminum 4" Deluxe Wood Grain	(Listed Below)	0.024	12'	25	42	1050

6" Fascia							
AFCNRD6TWH	Aluminum 6" Deluxe No Rib	WH	0.024	12'	25	37	925
AFCSC6T - -	Aluminum 6" Commercial Ribbed	WH	0.019	12'	25	37	925
AFCSD6TWH	Aluminum 6" Deluxe Ribbed	WH	0.024	12'	25	37	925
AFCWD6T - -	Aluminum 6" Deluxe Wood Grain	(Listed Below)	0.024	12'	25	37	925
AFCWC6T - -	Aluminum 6" Commercial Wood Grain	(Listed Below)	0.019	12'	25	37	925

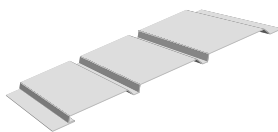
7-1/2" Fascia							
AFCWD75TWH	Aluminum 7 1/2" Deluxe Wood Grain	WH	0.024	12'	25	24	600

8" Fascia							
AFCWD8TWH	Aluminum 8" Deluxe Wood Grain No Rib	WH	0.024	12'	25	24	600
AFCWRC8T - -	Aluminum 8" Commercial Wood Grain Ribbed	WH/HY/MB	0.019	12'	25	24	600
AFCWC8T - -	Aluminum 8" Commercial Wood Grain	WH/HY/MB	0.019	12'	25	24	600

10" Fascia							
AFCW10WH	Aluminum 10" Wood Grain	WH	0.024	12'	25	8	200

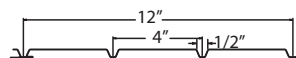


12" Soffit
(also known as Triple 4)



Part #	Description	Colors	Gauge/Thickness	Piece Length	Pieces/Box	Boxes/Pallet	Pieces/Pallet
AST12ST - -	Aluminum T/4 Solid	WH/HY/MB	0.014	12'	20	27	540
AST12FT - -	Aluminum T/4 Center Vent	WH/HY/MB	0.014	12'	20	27	540
AST12CT - -	Aluminum T/4 Full Vent	WH/HY/MB	0.014	12'	20	27	540
ASTN12ST - -	Aluminum T/4 NASA Solid	(Listed Below)	0.012	12'	20	27	540
ASTN12FT - -	Aluminum T/4 NASA Center Vent	(Listed Below)	0.012	12'	20	27	540
ASTN12CT - -	Aluminum T/4 NASA Full Vent	(Listed Below)	0.012	12'	20	27	540

AST12S

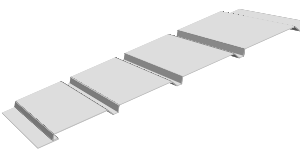


Soffit, Fascia & Accessories Colors:

COLOR	CODE	COLOR	CODE	COLOR	CODE	COLOR	CODE	COLOR	CODE
ALMOND	AL	BONE	BN	CHARCOAL GREY	CG	HICKORY BROWN	HB	WHITE	WH
ANTIQUÉ IVORY	AI	BROWNSTONE	BO	COLONIAL GREY	CO	MUSKET BROWN	MB		

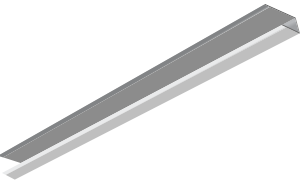
16" Soffit

(also known as Quad 4)

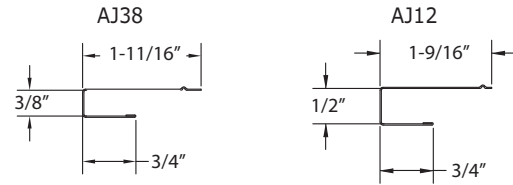


Part #	Description	Colors	Gauge/ Thickness	Piece Length	Pieces/ Box	Boxes/ Pallet	Pieces/ Pallet
ASTB16ST - -	Aluminum Q/4 Builders Solid	WH/HY/MB	0.013	12'	20	20	400
ASTB16FT - -	Aluminum Q/4 Builders Vent	WH/HY/MB	0.013	12'	20	20	400
ASTN16ST - -	Aluminum Q/4 NASA Solid	(Listed Below)	0.012	12'	20	20	400
ASTN16FT - -	Aluminum Q/4 NASA Vent	(Listed Below)	0.012	12'	20	20	400

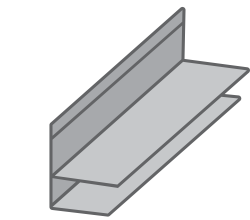
J-Channel



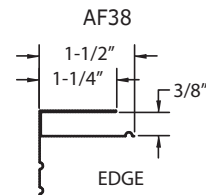
Part #	Description	Colors	Gauge/ Thickness	Piece Length	Pieces/ Box	Boxes/ Pallet	Pieces/ Pallet
AJ38T - -	Aluminum 3/8" (WFJ)	(Listed Below)	0.017	12'	50	40	2000
AJ12T - -	Aluminum 1/2"	WH/HY/MB/AL/BN	0.017	12'	50	40	2000
AJ58T - -	Aluminum 5/8"	WH/MB/BN	0.017	12'	50	40	2000



F-Channel



Part #	Description	Colors	Gauge/ Thickness	Piece Length	Pieces/ Box	Boxes/ Pallet	Pieces/ Pallet
AF38 - -	Aluminum 3/8"	WH/MB	0.017	12'	25	4	600



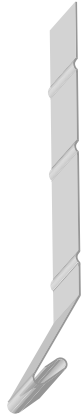
SOFFIT, FASCIA & ACCESSORIES

Soffit, Fascia & Accessories Colors:

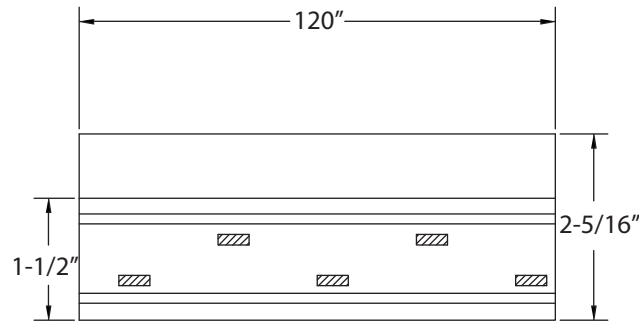
COLOR	CODE	COLOR	CODE	COLOR	CODE	COLOR	CODE	COLOR	CODE
ALMOND	AL	BONE	BN	CHARCOAL GREY	CG	HICKORY BROWN	HB	WHITE	WH
ANTIQUÉ IVORY	AI	BROWNSTONE	BO	COLONIAL GREY	CO	MUSKET BROWN	MB		

Starter Strip

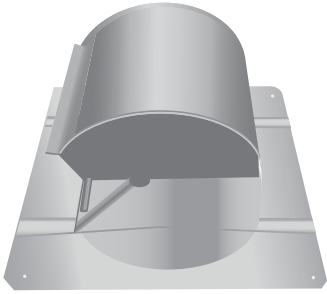
Part #	Description	Colors	Gauge/ Thickness	Piece Length	Pieces/ Box	Boxes/ Pallet	Pieces/ Pallet
ASS25ML	Aluminum 2-1/2"	Mill	0.019	10'	50	24	1200
ASS275ML	Aluminum 2-3/4"	Mill	0.019	10'	50	24	1200



ASS25ML

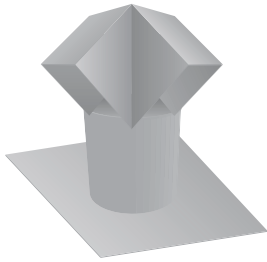


Goose Neck



Part #	Description	Colors	Gauge/Thickness	Piece Length	Pieces/Box	Boxes/Pallet
LGND4ML	GLUM 4" DAMP	Mill	26 ga/0.019	6-1/8	24	12
LGND4 - -	GLUM 4" DAMP	BK/BR	26 ga/0.019	6-1/8	24	12
LGNTD4ML	GLUM TILE 4" DAMP	Mill	26 ga/0.019	13.5	10	12
LGND6ML	GLUM 6" DAMP	Mill	26 ga/0.019	6-1/8	16	12
LGNTD6ML	GLUM TILE 6" DAMP	Mill	26 ga/0.019	13	6	12
LGND10ML	GLUM 10" DAMP	Mill	26 ga/0.019	8-7/8	6	12
LGND10 - -	GLUM 10" DAMP	WH/BK/BR	26 ga/0.019	8-7/8	6	12
LGNTD10ML	GLUM TILE 10" DAMP	Mill	26 ga/0.019	14-1/8	4	12

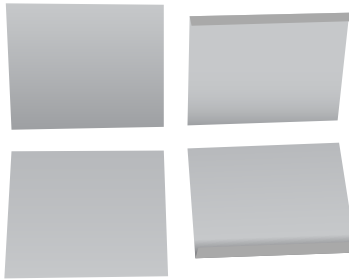
Roof Jacks



Part #	Description	Colors	Gauge/Thickness	Pieces/Box	Boxes/Pallet
GRJ50ML	Galvanized 5" 0/12P	Mill	26 ga/0.019	8	12
GRJ54ML	Galvanized 5" 4/12P	Mill	26 ga/0.019	8	12
GRJ100ML	Galvanized 10" 0/12P	Mill	26 ga/0.019	5	12
GRJ104ML	Galvanized 10" 4/12P	Mill	26 ga/0.019	5	12

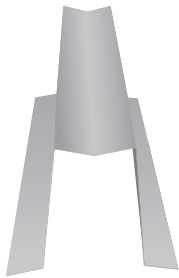
VENTS

Tile W-Valley



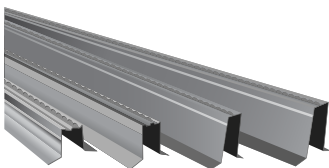
Part #	Description	Colors	Gauge/ Thickness	Piece Length	Pieces/ Box	Pieces/ Bundle	Pieces/ Pallet
Professional							
ATVH24WH	Aluminum 24" W-Valley Tile w/Hem	WH	0.025	10'		13	26
ATVH324ML	Aluminum 24" W-Valley Tile w/Hem .032	Mill	0.032	10'		13	26
LTV24 - -	Galvalume 24" W-Valley Tile	WH/BR/BK	26 ga/0.019	10'		25	50
LTV24ML	Galvalume 24" W-Valley Tile	Mill	26 ga/0.019	10'		25	50
LTVH24 - -	Galvalume 24" W-Valley Tile w/Hem	WH/BR/BK	26 ga/0.019	10'		13	26
LTVH24ML	Galvalume 24" W-Valley Tile w/Hem	Mill	26 ga/0.019	10'		13	26
CPSV24	Copper Plus 24" W-Valley Tile	Copper Plus	0.016	10'	Order by the pc.		
CPSVH24	Copper Plus 24" W-Valley Tile w/Hem	Copper Plus	0.016	10'	Order by the pc.		

Tile Ridge Cap Riser



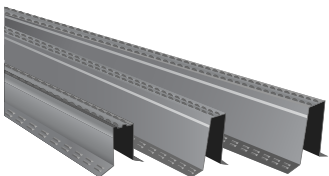
Part #	Description	Colors	Gauge/ Thickness	Piece Length	Pieces/ Bundle	Pieces/ Pallet
LRCR3ML	Galvalume 3"	Mill	26 ga/0.019	10'	15	75
LRCR4ML	Galvalume 4"	Mill	26 ga/0.019	10'	15	75
LRCR5ML	Galvalume 5"	Mill	26 ga/0.019	10'	15	75
LRCR6ML	Galvalume 6"	Mill	26 ga/0.019	10'	15	75

Trim Lock Ridge Channel



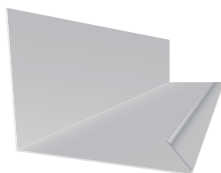
Part #	Description	Colors	Gauge/ Thickness	Piece Length	Pieces/ Bundle	Pieces/ Pallet
13MIETLR63	Galvanized 3"	Mill	26 ga/0.019	10'	15	50
13MIETLR635	Galvanized 3-1/2"	Mill	26 ga/0.019	10'	15	50
13MIETLR64	Galvanized 4"	Mill	26 ga/0.019	10'	15	50
13MIETLR65	Galvanized 5"	Mill	26 ga/0.019	10'	15	50
13MIETLR66	Galvanized 6"	Mill	26 ga/0.019	10'	15	50

Trim Lock Plus Ridge Channel



Part #	Description	Colors	Gauge/ Thickness	Piece Length	Pieces/ Bundle	Pieces/ Pallet
Call For Part#	Galvanized 3"	Mill	26 ga/0.019	10'	15	50
Call For Part#	Galvanized 3-1/2"	Mill	26 ga/0.019	10'	15	50
Call For Part#	Galvanized 4"	Mill	26 ga/0.019	10'	15	50
Call For Part#	Galvanized 5"	Mill	26 ga/0.019	10'	15	50
Call For Part#	Galvanized 6"	Mill	26 ga/0.019	10'	15	50

Tile Wall Flashing



Part #	Description	Colors	Gauge/ Thickness	Piece Length	Pieces/ Box	Pieces/ Bundle
AWF156WH	Aluminum 5 X 6 X 1	WH	0.025	10'		10
AWF156ML	Aluminum 5 X 6 X 1	Mill	0.025	10'		10
AWF3561ML	Aluminum 5 X 6 X 1	Mill	0.032	10'		10
LTRWFML	Galvalume 5 X 6 X 1	Mill	26 ga/0.019	10'		10
CPTRWF	Copper Plus 5 X 6 X 1	Copper Plus	0.016	10'	Order by the pc.	

ALUMINUM Roofing Accessories Colors:

COLOR	CODE	COLOR	CODE	COLOR	CODE	COLOR	CODE	COLOR	CODE
BLACK	BK	BRONZE	BZ	BROWN	BR	MILL FINISH	ML	WHITE	WH

STEEL Roofing Accessories Colors:

COLOR	CODE	COLOR	CODE	COLOR	CODE	COLOR	CODE	COLOR	CODE
BLACK	BK	GREEN	GN	MILL FINISH	ML	TERRACOTTA	TC	WHITE	WH
BROWN	BR	GREY	GY	TAN	TTN	TILE RED	TTR		

Eave Closure (Bird Stop)



Part #	Description	Colors	Gauge/Thickness	Piece Length	Pieces/Bundle
Altusa					
Call For Part#	Aluminum Slate	(Listed Below)	0.024 / 0.032	10'	10
Call For Part#	Galvanized Slate	(Listed Below)	26 ga/0.019	10'	10
Call For Part#	Aluminum Spanish "S"	(Listed Below)	0.024 / 0.032	10'	10
Call For Part#	Galvanized Spanish "S"	(Listed Below)	26 ga/0.019	10'	10

Eagle

AFLEC - -	Aluminum Bel Air Flat	(Listed Below)	0.024 / 0.032	10'	10
GFLEC - -	Galvanized Bel Air Flat	(Listed Below)	26 ga/0.019	10'	10
Call For Part#	Aluminum Capistrano	(Listed Below)	0.024 / 0.032	10'	10
Call For Part#	Galvanized Capistrano	(Listed Below)	26 ga/0.019	10'	10
Call For Part#	Aluminum Malibu	(Listed Below)	0.024 / 0.032	10'	10
Call For Part#	Galvanized Malibu	(Listed Below)	26 ga/0.019	10'	10
Call For Part#	Aluminum Ponderosa	(Listed Below)	0.024 / 0.032	10'	10
Call For Part#	Galvanized Ponderosa	(Listed Below)	26 ga/0.019	10'	10

Entergra

Call For Part#	Aluminum Bella	(Listed Below)	0.024 / 0.032	10'	10
Call For Part#	Galvanized Bella	(Listed Below)	26 ga/0.019	10'	10
Call For Part#	Aluminum Bermunda Flat	(Listed Below)	0.024 / 0.032	10'	10
Call For Part#	Galvanized Bermunda Flat	(Listed Below)	26 ga/0.019	10'	10
Call For Part#	Aluminum Estate "S" (Okeechobee Plant)	(Listed Below)	0.024 / 0.032	10'	10
Call For Part#	Galvanized Estate "S" (Okeechobee Plant)	(Listed Below)	26 ga/0.019	10'	10
Call For Part#	Aluminum Skandia	(Listed Below)	0.024 / 0.032	10'	10
Call For Part#	Galvanized Skandia	(Listed Below)	26 ga/0.019	10'	10
Call For Part#	Aluminum Valencia - Spanish "S"	(Listed Below)	0.024 / 0.032	10'	10
Call For Part#	Galvanized Valencia - Spanish "S"	(Listed Below)	26 ga/0.019	10'	10
Call For Part#	Aluminum Galena - Spanish "S"	(Listed Below)	0.024 / 0.032	10'	10
Call For Part#	Galvanized Galena - Spanish "S"	(Listed Below)	26 ga/0.019	10'	10

Hanson

Call For Part#	Aluminum Hacienda (Deerfield Plant)	(Listed Below)	0.024 / 0.032	10'	10
Call For Part#	Galvanized Hacienda (Deerfield Plant)	(Listed Below)	26 ga/0.019	10'	10
Call For Part#	Aluminum Hacienda (Hobe Sound Plant)	(Listed Below)	0.024 / 0.032	10'	10
Call For Part#	Galvanized Hacienda (Hobe Sound Plant)	(Listed Below)	26 ga/0.019	10'	10
Call For Part#	Aluminum Nordic Shake	(Listed Below)	0.024 / 0.032	10'	10
Call For Part#	Galvanized Nordic Shake	(Listed Below)	26 ga/0.019	10'	10
Call For Part#	Aluminum Palema	(Listed Below)	0.024 / 0.032	10'	10
Call For Part#	Galvanized Palema	(Listed Below)	26 ga/0.019	10'	10
Call For Part#	Aluminum Regal (Spanish "S" II)	(Listed Below)	0.024 / 0.032	10'	10
Call For Part#	Galvanized Regal (Spanish "S" II)	(Listed Below)	26 ga/0.019	10'	10
Call For Part#	Aluminum Rustic Shake	(Listed Below)	0.024 / 0.032	10'	10
Call For Part#	Galvanized Rustic Shake	(Listed Below)	26 ga/0.019	10'	10
Call For Part#	Aluminum Venetian	(Listed Below)	0.024 / 0.032	10'	10
Call For Part#	Galvanized Venetian	(Listed Below)	26 ga/0.019	10'	10

TILE ACCESSORIES

ALUMINUM Roofing Accessories Colors:

COLOR	CODE	COLOR	CODE	COLOR	CODE	COLOR	CODE	COLOR	CODE
BLACK	BK	BRONZE	BZ	BROWN	BR	MILL FINISH	ML	WHITE	WH

STEEL Roofing Accessories Colors:

COLOR	CODE	COLOR	CODE	COLOR	CODE	COLOR	CODE	COLOR	CODE
BLACK	BK	GREEN	GN	MILL FINISH	ML	TERRACOTTA	TC	WHITE	WH
BROWN	BR	GREY	GY	TAN	TTN	TILE RED	TTR		

Eave Closure (Bird Stop)
cont.



Part #	Description	Colors	Gauge/ Thickness	Piece Length	Pieces/ Bundle
--------	-------------	--------	---------------------	-----------------	-------------------

Mextile

Call For Part#	Aluminum Country Windsor	(Listed Below)	0.024 / 0.032	10'	10
Call For Part#	Galvanized Country Windsor	(Listed Below)	26 ga/0.019	10'	10
Call For Part#	Aluminum Catalana	(Listed Below)	0.024 / 0.032	10'	10
Call For Part#	Galvanized Catalana	(Listed Below)	26 ga/0.019	10'	10
Call For Part#	Aluminum Iberia	(Listed Below)	0.024 / 0.032	10'	10
Call For Part#	Galvanized Iberia	(Listed Below)	26 ga/0.019	10'	10
Call For Part#	Aluminum Mediterranean	(Listed Below)	0.024 / 0.032	10'	10
Call For Part#	Galvanized Mediterranean	(Listed Below)	26 ga/0.019	10'	10
Call For Part#	Aluminum Windsor Classic	(Listed Below)	0.024 / 0.032	10'	10
Call For Part#	Galvanized Windsor Classic	(Listed Below)	26 ga/0.019	10'	10
Call For Part#	Aluminum Windsor Slate	(Listed Below)	0.024 / 0.032	10'	10
Call For Part#	Galvanized Windsor Slate	(Listed Below)	26 ga/0.019	10'	10
Call For Part#	Aluminum Windsor Split Slate	(Listed Below)	0.024 / 0.032	10'	10
Call For Part#	Galvanized Windsor Split Slate	(Listed Below)	26 ga/0.019	10'	10

Monier Lifetile

Call For Part#	Aluminum Atlantis	(Listed Below)	0.024 / 0.032	10'	10
Call For Part#	Galvanized Atlantis	(Listed Below)	26 ga/0.019	10'	10
Call For Part#	Aluminum Barelona 900	(Listed Below)	0.024 / 0.032	10'	10
Call For Part#	Galvanized Barelona 900	(Listed Below)	26 ga/0.019	10'	10
Call For Part#	Aluminum Cedar Lite	(Listed Below)	0.024 / 0.032	10'	10
Call For Part#	Galvanized Cedar Lite	(Listed Below)	26 ga/0.019	10'	10
Call For Part#	Aluminum Madera	(Listed Below)	0.024 / 0.032	10'	10
Call For Part#	Galvanized Madera	(Listed Below)	26 ga/0.019	10'	10
Call For Part#	Aluminum Saxony Slate	(Listed Below)	0.024 / 0.032	10'	10
Call For Part#	Galvanized Saxony Slate	(Listed Below)	26 ga/0.019	10'	10
Call For Part#	Aluminum SS Nuevo	(Listed Below)	0.024 / 0.032	10'	10
Call For Part#	Galvanized SS Nuevo	(Listed Below)	26 ga/0.019	10'	10
Call For Part#	Aluminum T Metal	(Listed Below)	0.024 / 0.032	10'	10
Call For Part#	Galvanized T Metal	(Listed Below)	26 ga/0.019	10'	10
Call For Part#	Aluminum Tejas	(Listed Below)	0.024 / 0.032	10'	10
Call For Part#	Galvanized Tejas	(Listed Below)	26 ga/0.019	10'	10
Call For Part#	Aluminum Tradicao	(Listed Below)	0.024 / 0.032	10'	10
Call For Part#	Galvanized Tradicao	(Listed Below)	26 ga/0.019	10'	10
Call For Part#	Aluminum Vanguard	(Listed Below)	0.024 / 0.032	10'	10
Call For Part#	Galvanized Vanguard	(Listed Below)	26 ga/0.019	10'	10
Call For Part#	Aluminum Villa	(Listed Below)	0.024 / 0.032	10'	10
Call For Part#	Galvanized Villa	(Listed Below)	26 ga/0.019	10'	10
Call For Part#	Aluminum Villa NL (900)	(Listed Below)	0.024 / 0.032	10'	10
Call For Part#	Galvanized Villa NL (900)	(Listed Below)	26 ga/0.019	10'	10

TILE
ACCESSORIES

ALUMINUM Roofing Accessories Colors:

COLOR	CODE	COLOR	CODE	COLOR	CODE	COLOR	CODE
BLACK	BK	BRONZE	BZ	BROWN	BR	MILL FINISH	ML
						WHITE	WH

STEEL Roofing Accessories Colors:

COLOR	CODE	COLOR	CODE	COLOR	CODE	COLOR	CODE
BLACK	BK	GREEN	GN	MILL FINISH	ML	TERRACOTTA	TC
BROWN	BR	GREY	GY	TAN	TTN	TILE RED	TTR
						WHITE	WH

Eave Closure (Bird Stop)
cont.



Part #	Description	Colors	Gauge/ Thickness	Piece Length	Pieces/ Bundle
--------	-------------	--------	---------------------	-----------------	-------------------

La Escandella

Call For Part#	Aluminum Escandella	(Listed Below)	0.024 / 0.032	10'	10
Call For Part#	Galvanized Escandella	(Listed Below)	26 ga/0.019	10'	10

Santa Fe

Call For Part#	Aluminum Flat	(Listed Below)	0.024 / 0.032	10'	10
Call For Part#	Galvanized Flat	(Listed Below)	26 ga/0.019	10'	10
Call For Part#	Aluminum Spanish "S"	(Listed Below)	0.024 / 0.032	10'	10
Call For Part#	Galvanized Spanish "S"	(Listed Below)	26 ga/0.019	10'	10

Santa Maria

Call For Part#	Aluminum Flat	(Listed Below)	0.024 / 0.032	10'	10
Call For Part#	Galvanized Flat	(Listed Below)	26 ga/0.019	10'	10
Call For Part#	Aluminum Spanish "S"	(Listed Below)	0.024 / 0.032	10'	10
Call For Part#	Galvanized Spanish "S"	(Listed Below)	26 ga/0.019	10'	10

Superior Roof Tile

Call For Part#	Aluminum Bold Roll	(Listed Below)	0.024 / 0.032	10'	10
Call For Part#	Galvanized Bold Roll	(Listed Below)	26 ga/0.019	10'	10
Call For Part#	Aluminum Slate	(Listed Below)	0.024 / 0.032	10'	10
Call For Part#	Galvanized Slate	(Listed Below)	26 ga/0.019	10'	10

US Tile

Call For Part#	Aluminum The Real "S"	(Listed Below)	0.024 / 0.032	10'	10
Call For Part#	Galvanized The Real "S"	(Listed Below)	26 ga/0.019	10'	10

TILE
ACCESSORIES

ALUMINUM Roofing Accessories Colors:

COLOR	CODE	COLOR	CODE	COLOR	CODE	COLOR	CODE	COLOR	CODE
BLACK	BK	BRONZE	BZ	BROWN	BR	MILL FINISH	ML	WHITE	WH

STEEL Roofing Accessories Colors:

COLOR	CODE	COLOR	CODE	COLOR	CODE	COLOR	CODE	COLOR	CODE
BLACK	BK	GREEN	GN	MILL FINISH	ML	TERRACOTTA	TC	WHITE	WH
BROWN	BR	GREY	GY	TAN	TTN	TILE RED	TTR		

Awnings - 24" Length



Part #	Description	Slat Length	No. of Slats	Awning Width	Awning Coverage (Ext)	Awning Coverage (Down)
Call For Part#	27 X 24 Awning	24	9	28	24.00	20.00
Call For Part#	30 X 24 Awning	24	10	31	24.00	20.00
Call For Part#	33 X 24 Awning	24	11	34	24.00	20.00
Call For Part#	36 X 24 Awning	24	12	37	24.00	20.00
Call For Part#	39 X 24 Awning	24	13	40	24.00	20.00
Call For Part#	43 X 24 Awning	24	14	43	24.00	20.00
Call For Part#	46 X 24 Awning	24	15	46	24.00	20.00
Call For Part#	49 X 24 Awning	24	16	49	24.00	20.00
Call For Part#	52 X 24 Awning	24	17	52	24.00	20.00
Call For Part#	55 X 24 Awning	24	18	55	24.00	20.00
Call For Part#	58 X 24 Awning	24	19	58	24.00	20.00
Call For Part#	61 X 24 Awning	24	20	61	24.00	20.00
Call For Part#	64 X 24 Awning	24	21	64	24.00	20.00
Call For Part#	67 X 24 Awning	24	22	67	24.00	20.00
Call For Part#	70 X 24 Awning	24	23	70	24.00	20.00
Call For Part#	73 X 24 Awning	24	24	74	24.00	20.00
Call For Part#	77 X 24 Awning	24	25	77	24.00	20.00
Call For Part#	80 X 24 Awning	24	26	80	24.00	20.00
Call For Part#	83 X 24 Awning	24	27	83	24.00	20.00
Call For Part#	86 X 24 Awning	24	28	86	24.00	20.00
Call For Part#	89 X 24 Awning	24	29	89	24.00	20.00
Call For Part#	92 X 24 Awning	24	30	92	24.00	20.00
Call For Part#	95 X 24 Awning	24	31	95	24.00	20.00
Call For Part#	98 X 24 Awning	24	32	98	24.00	20.00
Call For Part#	101 X 24 Awning	24	33	101	24.00	20.00
Call For Part#	104 X 24 Awning	24	34	104	24.00	20.00
Call For Part#	107 X 24 Awning	24	35	107	24.00	20.00
Call For Part#	110 X 24 Awning	24	36	110	24.00	20.00
Call For Part#	113 X 24 Awning	24	37	113	24.00	20.00
Call For Part#	116 X 24 Awning	24	38	116	24.00	20.00
Call For Part#	119 X 24 Awning	24	39	119	24.00	20.00
Call For Part#	122 X 24 Awning	24	40	123	24.00	20.00
Call For Part#	126 X 24 Awning	24	41	126	24.00	20.00
Call For Part#	129 X 24 Awning	24	42	129	24.00	20.00
Call For Part#	132 X 24 Awning	24	43	132	24.00	20.00
Call For Part#	135 X 24 Awning	24	44	135	24.00	20.00
Call For Part#	138 X 24 Awning	24	45	138	24.00	20.00
Call For Part#	141 X 24 Awning	24	46	141	24.00	20.00
Call For Part#	144 X 24 Awning	24	47	144	24.00	20.00
Call For Part#	147 X 24 Awning	24	48	147	24.00	20.00
Call For Part#	150 X 24 Awning	24	49	150	24.00	20.00
Call For Part#	153 X 24 Awning	24	50	153	24.00	20.00

Note: All Dimensions in Inches

Awning Colors:

COLOR	CODE	COLOR	CODE	COLOR	CODE	COLOR	CODE
AQUA	AQ	BRONZE	BZ	DARK GREEN	DG	PEACH	PE
AVOCADO	AV	BROWN	BR	GRAY	GY	RED	RD
BLACK	BK	CREAM	CR	IVORY	IV	TAN	TN
BRIGHT YELLOW	BY	DARK BLUE	DB	METALLIC BLUE	MU	WHITE	WH

Awnings - 30" Length



Part #	Description	Slat Length	No. of Slats	Awning Width	Awning Coverage (Ext)	Awning Coverage (Down)
Call For Part#	27 X 30 Awning	30	9	28	30.00	26.00
Call For Part#	30 X 30 Awning	30	10	31	30.00	26.00
Call For Part#	33 X 30 Awning	30	11	34	30.00	26.00
Call For Part#	36 X 30 Awning	30	12	37	30.00	26.00
Call For Part#	39 X 30 Awning	30	13	40	30.00	26.00
Call For Part#	43 X 30 Awning	30	14	43	30.00	26.00
Call For Part#	46 X 30 Awning	30	15	46	30.00	26.00
Call For Part#	49 X 30 Awning	30	16	49	30.00	26.00
Call For Part#	52 X 30 Awning	30	17	52	30.00	26.00
Call For Part#	55 X 30 Awning	30	18	55	30.00	26.00
Call For Part#	58 X 30 Awning	30	19	58	30.00	26.00
Call For Part#	61 X 30 Awning	30	20	61	30.00	26.00
Call For Part#	64 X 30 Awning	30	21	64	30.00	26.00
Call For Part#	67 X 30 Awning	30	22	67	30.00	26.00
Call For Part#	70 X 30 Awning	30	23	70	30.00	26.00
Call For Part#	73 X 30 Awning	30	24	74	30.00	26.00
Call For Part#	77 X 30 Awning	30	25	77	30.00	26.00
Call For Part#	80 X 30 Awning	30	26	80	30.00	26.00
Call For Part#	83 X 30 Awning	30	27	83	30.00	26.00
Call For Part#	86 X 30 Awning	30	28	86	30.00	26.00
Call For Part#	89 X 30 Awning	30	29	89	30.00	26.00
Call For Part#	92 X 30 Awning	30	30	92	30.00	26.00
Call For Part#	95 X 30 Awning	30	31	95	30.00	26.00
Call For Part#	98 X 30 Awning	30	32	98	30.00	26.00
Call For Part#	101 X 30 Awning	30	33	101	30.00	26.00
Call For Part#	104 X 30 Awning	30	34	104	30.00	26.00
Call For Part#	107 X 30 Awning	30	35	107	30.00	26.00
Call For Part#	110 X 30 Awning	30	36	110	30.00	26.00
Call For Part#	113 X 30 Awning	30	37	113	30.00	26.00
Call For Part#	116 X 30 Awning	30	38	116	30.00	26.00
Call For Part#	119 X 30 Awning	30	39	119	30.00	26.00
Call For Part#	122 X 30 Awning	30	40	123	30.00	26.00
Call For Part#	126 X 30 Awning	30	41	126	30.00	26.00
Call For Part#	129 X 30 Awning	30	42	129	30.00	26.00
Call For Part#	132 X 30 Awning	30	43	132	30.00	26.00
Call For Part#	135 X 30 Awning	30	44	135	30.00	26.00
Call For Part#	138 X 30 Awning	30	45	138	30.00	26.00
Call For Part#	141 X 30 Awning	30	46	141	30.00	26.00
Call For Part#	144 X 30 Awning	30	47	144	30.00	26.00
Call For Part#	147 X 30 Awning	30	48	147	30.00	26.00
Call For Part#	150 X 30 Awning	30	49	150	30.00	26.00
Call For Part#	153 X 30 Awning	30	50	153	30.00	26.00

Note: All Dimensions in Inches

AWNINGS

Awning Colors:

COLOR	CODE	COLOR	CODE	COLOR	CODE	COLOR	CODE
AQUA	AQ	BRONZE	BZ	DARK GREEN	DG	PEACH	PE
AVOCADO	AV	BROWN	BR	GRAY	GY	RED	RD
BLACK	BK	CREAM	CR	IVORY	IV	TAN	TN
BRIGHT YELLOW	BY	DARK BLUE	DB	METALLIC BLUE	MU	WHITE	WH

Awnings - 33" Length



Part #	Description	Slat Length	No. of Slats	Awning Width	Awning Coverage (Ext)	Awning Coverage (Down)
Call For Part#	27 X 33 Awning	33	9	28	33.00	29.00
Call For Part#	30 X 33 Awning	33	10	31	33.00	29.00
Call For Part#	33 X 33 Awning	33	11	34	33.00	29.00
Call For Part#	36 X 33 Awning	33	12	37	33.00	29.00
Call For Part#	39 X 33 Awning	33	13	40	33.00	29.00
Call For Part#	43 X 33 Awning	33	14	43	33.00	29.00
Call For Part#	46 X 33 Awning	33	15	46	33.00	29.00
Call For Part#	49 X 33 Awning	33	16	49	33.00	29.00
Call For Part#	52 X 33 Awning	33	17	52	33.00	29.00
Call For Part#	55 X 33 Awning	33	18	55	33.00	29.00
Call For Part#	58 X 33 Awning	33	19	58	33.00	29.00
Call For Part#	61 X 33 Awning	33	20	61	33.00	29.00
Call For Part#	64 X 33 Awning	33	21	64	33.00	29.00
Call For Part#	67 X 33 Awning	33	22	67	33.00	29.00
Call For Part#	70 X 33 Awning	33	23	70	33.00	29.00
Call For Part#	73 X 33 Awning	33	24	74	33.00	29.00
Call For Part#	77 X 33 Awning	33	25	77	33.00	29.00
Call For Part#	80 X 33 Awning	33	26	80	33.00	29.00
Call For Part#	83 X 33 Awning	33	27	83	33.00	29.00
Call For Part#	86 X 33 Awning	33	28	86	33.00	29.00
Call For Part#	89 X 33 Awning	33	29	89	33.00	29.00
Call For Part#	92 X 33 Awning	33	30	92	33.00	29.00
Call For Part#	95 X 33 Awning	33	31	95	33.00	29.00
Call For Part#	98 X 33 Awning	33	32	98	33.00	29.00
Call For Part#	101 X 33 Awning	33	33	101	33.00	29.00
Call For Part#	104 X 33 Awning	33	34	104	33.00	29.00
Call For Part#	107 X 33 Awning	33	35	107	33.00	29.00
Call For Part#	110 X 33 Awning	33	36	110	33.00	29.00
Call For Part#	113 X 33 Awning	33	37	113	33.00	29.00
Call For Part#	116 X 33 Awning	33	38	116	33.00	29.00
Call For Part#	119 X 33 Awning	33	39	119	33.00	29.00
Call For Part#	122 X 33 Awning	33	40	123	33.00	29.00
Call For Part#	126 X 33 Awning	33	41	126	33.00	29.00
Call For Part#	129 X 33 Awning	33	42	129	33.00	29.00
Call For Part#	132 X 33 Awning	33	43	132	33.00	29.00
Call For Part#	135 X 33 Awning	33	44	135	33.00	29.00
Call For Part#	138 X 33 Awning	33	45	138	33.00	29.00
Call For Part#	141 X 33 Awning	33	46	141	33.00	29.00
Call For Part#	144 X 33 Awning	33	47	144	33.00	29.00
Call For Part#	147 X 33 Awning	33	48	147	33.00	29.00
Call For Part#	150 X 33 Awning	33	49	150	33.00	29.00
Call For Part#	153 X 33 Awning	33	50	153	33.00	29.00

Note: All Dimensions in Inches

Awning Colors:

COLOR	CODE	COLOR	CODE	COLOR	CODE	COLOR	CODE
AQUA	AQ	BRONZE	BZ	DARK GREEN	DG	PEACH	PE
AVOCADO	AV	BROWN	BR	GRAY	GY	RED	RD
BLACK	BK	CREAM	CR	IVORY	IV	TAN	TN
BRIGHT YELLOW	BY	DARK BLUE	DB	METALLIC BLUE	MU	WHITE	WH

Awnings - 36" Length



Part #	Description	Slat Length	No. of Slats	Awning Width	Awning Coverage (Ext)	Awning Coverage (Down)
Call For Part#	27 X 36 Awning	36	9	28	36.00	32.00
Call For Part#	30 X 36 Awning	36	10	31	36.00	32.00
Call For Part#	33 X 36 Awning	36	11	34	36.00	32.00
Call For Part#	36 X 36 Awning	36	12	37	36.00	32.00
Call For Part#	39 X 36 Awning	36	13	40	36.00	32.00
Call For Part#	43 X 36 Awning	36	14	43	36.00	32.00
Call For Part#	46 X 36 Awning	36	15	46	36.00	32.00
Call For Part#	49 X 36 Awning	36	16	49	36.00	32.00
Call For Part#	52 X 36 Awning	36	17	52	36.00	32.00
Call For Part#	55 X 36 Awning	36	18	55	36.00	32.00
Call For Part#	58 X 36 Awning	36	19	58	36.00	32.00
Call For Part#	61 X 36 Awning	36	20	61	36.00	32.00
Call For Part#	64 X 36 Awning	36	21	64	36.00	32.00
Call For Part#	67 X 36 Awning	36	22	67	36.00	32.00
Call For Part#	70 X 36 Awning	36	23	70	36.00	32.00
Call For Part#	73 X 36 Awning	36	24	74	36.00	32.00
Call For Part#	77 X 36 Awning	36	25	77	36.00	32.00
Call For Part#	80 X 36 Awning	36	26	80	36.00	32.00
Call For Part#	83 X 36 Awning	36	27	83	36.00	32.00
Call For Part#	86 X 36 Awning	36	28	86	36.00	32.00
Call For Part#	89 X 36 Awning	36	29	89	36.00	32.00
Call For Part#	92 X 36 Awning	36	30	92	36.00	32.00
Call For Part#	95 X 36 Awning	36	31	95	36.00	32.00
Call For Part#	98 X 36 Awning	36	32	98	36.00	32.00
Call For Part#	101 X 36 Awning	36	33	101	36.00	32.00
Call For Part#	104 X 36 Awning	36	34	104	36.00	32.00
Call For Part#	107 X 36 Awning	36	35	107	36.00	32.00
Call For Part#	110 X 36 Awning	36	36	110	36.00	32.00
Call For Part#	113 X 36 Awning	36	37	113	36.00	32.00
Call For Part#	116 X 36 Awning	36	38	116	36.00	32.00
Call For Part#	119 X 36 Awning	36	39	119	36.00	32.00
Call For Part#	122 X 36 Awning	36	40	123	36.00	32.00
Call For Part#	126 X 36 Awning	36	41	126	36.00	32.00
Call For Part#	129 X 36 Awning	36	42	129	36.00	32.00
Call For Part#	132 X 36 Awning	36	43	132	36.00	32.00
Call For Part#	135 X 36 Awning	36	44	135	36.00	32.00
Call For Part#	138 X 36 Awning	36	45	138	36.00	32.00
Call For Part#	141 X 36 Awning	36	46	141	36.00	32.00
Call For Part#	144 X 36 Awning	36	47	144	36.00	32.00
Call For Part#	147 X 36 Awning	36	48	147	36.00	32.00
Call For Part#	150 X 36 Awning	36	49	150	36.00	32.00
Call For Part#	153 X 36 Awning	36	50	153	36.00	32.00

Note: All Dimensions in Inches

AWNINGS

Awning Colors:

COLOR	CODE	COLOR	CODE	COLOR	CODE	COLOR	CODE
AQUA	AQ	BRONZE	BZ	DARK GREEN	DG	PEACH	PE
AVOCADO	AV	BROWN	BR	GRAY	GY	RED	RD
BLACK	BK	CREAM	CR	IVORY	IV	TAN	TN
BRIGHT YELLOW	BY	DARK BLUE	DB	METALLIC BLUE	MU	WHITE	WH

Awnings - 39" Length



Part #	Description	Slat Length	No. of Slats	Awning Width	Awning Coverage (Ext)	Awning Coverage (Down)
Call For Part#	27 X 39 Awning	39	9	28	39.00	35.00
Call For Part#	30 X 39 Awning	39	10	31	39.00	35.00
Call For Part#	33 X 39 Awning	39	11	34	39.00	35.00
Call For Part#	36 X 39 Awning	39	12	37	39.00	35.00
Call For Part#	39 X 39 Awning	39	13	40	39.00	35.00
Call For Part#	43 X 39 Awning	39	14	43	39.00	35.00
Call For Part#	46 X 39 Awning	39	15	46	39.00	35.00
Call For Part#	49 X 39 Awning	39	16	49	39.00	35.00
Call For Part#	52 X 39 Awning	39	17	52	39.00	35.00
Call For Part#	55 X 39 Awning	39	18	55	39.00	35.00
Call For Part#	58 X 39 Awning	39	19	58	39.00	35.00
Call For Part#	61 X 39 Awning	39	20	61	39.00	35.00
Call For Part#	64 X 39 Awning	39	21	64	39.00	35.00
Call For Part#	67 X 39 Awning	39	22	67	39.00	35.00
Call For Part#	70 X 39 Awning	39	23	70	39.00	35.00
Call For Part#	73 X 39 Awning	39	24	74	39.00	35.00
Call For Part#	77 X 39 Awning	39	25	77	39.00	35.00
Call For Part#	80 X 39 Awning	39	26	80	39.00	35.00
Call For Part#	83 X 39 Awning	39	27	83	39.00	35.00
Call For Part#	86 X 39 Awning	39	28	86	39.00	35.00
Call For Part#	89 X 39 Awning	39	29	89	39.00	35.00
Call For Part#	92 X 39 Awning	39	30	92	39.00	35.00
Call For Part#	95 X 39 Awning	39	31	95	39.00	35.00
Call For Part#	98 X 39 Awning	39	32	98	39.00	35.00
Call For Part#	101 X 39 Awning	39	33	101	39.00	35.00
Call For Part#	104 X 39 Awning	39	34	104	39.00	35.00
Call For Part#	107 X 39 Awning	39	35	107	39.00	35.00
Call For Part#	110 X 39 Awning	39	36	110	39.00	35.00
Call For Part#	113 X 39 Awning	39	37	113	39.00	35.00
Call For Part#	116 X 39 Awning	39	38	116	39.00	35.00
Call For Part#	119 X 39 Awning	39	39	119	39.00	35.00
Call For Part#	122 X 39 Awning	39	40	123	39.00	35.00
Call For Part#	126 X 39 Awning	39	41	126	39.00	35.00
Call For Part#	129 X 39 Awning	39	42	129	39.00	35.00
Call For Part#	132 X 39 Awning	39	43	132	39.00	35.00
Call For Part#	135 X 39 Awning	39	44	135	39.00	35.00
Call For Part#	138 X 39 Awning	39	45	138	39.00	35.00
Call For Part#	141 X 39 Awning	39	46	141	39.00	35.00
Call For Part#	144 X 39 Awning	39	47	144	39.00	35.00
Call For Part#	147 X 39 Awning	39	48	147	39.00	35.00
Call For Part#	150 X 39 Awning	39	49	150	39.00	35.00
Call For Part#	153 X 39 Awning	39	50	153	39.00	35.00

Note: All Dimensions in Inches

Awning Colors:

COLOR	CODE	COLOR	CODE	COLOR	CODE	COLOR	CODE
AQUA	AQ	BRONZE	BZ	DARK GREEN	DG	PEACH	PE
AVOCADO	AV	BROWN	BR	GRAY	GY	RED	RD
BLACK	BK	CREAM	CR	IVORY	IV	TAN	TN
BRIGHT YELLOW	BY	DARK BLUE	DB	METALLIC BLUE	MU	WHITE	WH

Awnings - 42" Length



Part #	Description	Slat Length	No. of Slats	Awning Width	Awning Coverage (Ext)	Awning Coverage (Down)
Call For Part#	27 X 42 Awning	42	9	28	42.00	38.00
Call For Part#	30 X 42 Awning	42	10	31	42.00	38.00
Call For Part#	33 X 42 Awning	42	11	34	42.00	38.00
Call For Part#	36 X 42 Awning	42	12	37	42.00	38.00
Call For Part#	39 X 42 Awning	42	13	40	42.00	38.00
Call For Part#	43 X 42 Awning	42	14	43	42.00	38.00
Call For Part#	46 X 42 Awning	42	15	46	42.00	38.00
Call For Part#	49 X 42 Awning	42	16	49	42.00	38.00
Call For Part#	52 X 42 Awning	42	17	52	42.00	38.00
Call For Part#	55 X 42 Awning	42	18	55	42.00	38.00
Call For Part#	58 X 42 Awning	42	19	58	42.00	38.00
Call For Part#	61 X 42 Awning	42	20	61	42.00	38.00
Call For Part#	64 X 42 Awning	42	21	64	42.00	38.00
Call For Part#	67 X 42 Awning	42	22	67	42.00	38.00
Call For Part#	70 X 42 Awning	42	23	70	42.00	38.00
Call For Part#	73 X 42 Awning	42	24	74	42.00	38.00
Call For Part#	77 X 42 Awning	42	25	77	42.00	38.00
Call For Part#	80 X 42 Awning	42	26	80	42.00	38.00
Call For Part#	83 X 42 Awning	42	27	83	42.00	38.00
Call For Part#	86 X 42 Awning	42	28	86	42.00	38.00
Call For Part#	89 X 42 Awning	42	29	89	42.00	38.00
Call For Part#	92 X 42 Awning	42	30	92	42.00	38.00
Call For Part#	95 X 42 Awning	42	31	95	42.00	38.00
Call For Part#	98 X 42 Awning	42	32	98	42.00	38.00
Call For Part#	101 X 42 Awning	42	33	101	42.00	38.00
Call For Part#	104 X 42 Awning	42	34	104	42.00	38.00
Call For Part#	107 X 42 Awning	42	35	107	42.00	38.00
Call For Part#	110 X 42 Awning	42	36	110	42.00	38.00
Call For Part#	113 X 42 Awning	42	37	113	42.00	38.00
Call For Part#	116 X 42 Awning	42	37	116	42.00	38.00
Call For Part#	119 X 42 Awning	42	38	119	42.00	38.00
Call For Part#	122 X 42 Awning	42	40	123	42.00	38.00
Call For Part#	126 X 42 Awning	42	41	126	42.00	38.00
Call For Part#	129 X 42 Awning	42	42	129	42.00	38.00
Call For Part#	132 X 42 Awning	42	43	132	42.00	38.00
Call For Part#	135 X 42 Awning	42	44	135	42.00	38.00
Call For Part#	138 X 42 Awning	42	45	138	42.00	38.00
Call For Part#	141 X 42 Awning	42	46	141	42.00	38.00
Call For Part#	144 X 42 Awning	42	47	144	42.00	38.00
Call For Part#	147 X 42 Awning	42	48	147	42.00	38.00
Call For Part#	150 X 42 Awning	42	49	150	42.00	38.00
Call For Part#	153 X 42 Awning	42	50	153	42.00	38.00

Note: All Dimensions in Inches

AWNINGS

Awning Colors:

COLOR	CODE	COLOR	CODE	COLOR	CODE	COLOR	CODE
AQUA	AQ	BRONZE	BZ	DARK GREEN	DG	PEACH	PE
AVOCADO	AV	BROWN	BR	GRAY	GY	RED	RD
BLACK	BK	CREAM	CR	IVORY	IV	TAN	TN
BRIGHT YELLOW	BY	DARK BLUE	DB	METALLIC BLUE	MU	WHITE	WH

Awnings - 46" Length



Part #	Description	Slat Length	No. of Slats	Awning Width	Awning Coverage (Ext)	Awning Coverage (Down)
Call For Part#	27 X 46 Awning	46	9	28	46.00	42.00
Call For Part#	30 X 46 Awning	46	10	31	46.00	42.00
Call For Part#	33 X 46 Awning	46	11	34	46.00	42.00
Call For Part#	36 X 46 Awning	46	12	37	46.00	42.00
Call For Part#	39 X 46 Awning	46	13	40	46.00	42.00
Call For Part#	43 X 46 Awning	46	14	43	46.00	42.00
Call For Part#	46 X 46 Awning	46	15	46	46.00	42.00
Call For Part#	49 X 46 Awning	46	16	49	46.00	42.00
Call For Part#	52 X 46 Awning	46	17	52	46.00	42.00
Call For Part#	55 X 46 Awning	46	18	55	46.00	42.00
Call For Part#	58 X 46 Awning	46	19	58	46.00	42.00
Call For Part#	61 X 46 Awning	46	20	61	46.00	42.00
Call For Part#	64 X 46 Awning	46	21	64	46.00	42.00
Call For Part#	67 X 46 Awning	46	22	67	46.00	42.00
Call For Part#	70 X 46 Awning	46	23	70	46.00	42.00
Call For Part#	73 X 46 Awning	46	24	74	46.00	42.00
Call For Part#	77 X 46 Awning	46	25	77	46.00	42.00
Call For Part#	80 X 46 Awning	46	26	80	46.00	42.00
Call For Part#	83 X 46 Awning	46	27	83	46.00	42.00
Call For Part#	86 X 46 Awning	46	28	86	46.00	42.00
Call For Part#	89 X 46 Awning	46	29	89	46.00	42.00
Call For Part#	92 X 46 Awning	46	30	92	46.00	42.00
Call For Part#	95 X 46 Awning	46	31	95	46.00	42.00
Call For Part#	98 X 46 Awning	46	32	98	46.00	42.00
Call For Part#	101 X 46 Awning	46	33	101	46.00	42.00
Call For Part#	104 X 46 Awning	46	34	104	46.00	42.00
Call For Part#	107 X 46 Awning	46	35	107	46.00	42.00
Call For Part#	110 X 46 Awning	46	36	110	46.00	42.00
Call For Part#	113 X 46 Awning	46	37	113	46.00	42.00
Call For Part#	116 X 46 Awning	46	38	116	46.00	42.00
Call For Part#	119 X 46 Awning	46	39	119	46.00	42.00
Call For Part#	122 X 46 Awning	46	40	123	46.00	42.00
Call For Part#	126 X 46 Awning	46	41	126	46.00	42.00
Call For Part#	129 X 46 Awning	46	42	129	46.00	42.00
Call For Part#	132 X 46 Awning	46	43	132	46.00	42.00
Call For Part#	135 X 46 Awning	46	44	135	46.00	42.00
Call For Part#	138 X 46 Awning	46	45	138	46.00	42.00
Call For Part#	141 X 46 Awning	46	46	141	46.00	42.00
Call For Part#	144 X 46 Awning	46	47	144	46.00	42.00
Call For Part#	147 X 46 Awning	46	48	147	46.00	42.00
Call For Part#	150 X 46 Awning	46	49	150	46.00	42.00
Call For Part#	153 X 46 Awning	46	50	153	46.00	42.00

Note: All Dimensions in Inches

Awning Colors:

COLOR	CODE	COLOR	CODE	COLOR	CODE	COLOR	CODE
AQUA	AQ	BRONZE	BZ	DARK GREEN	DG	PEACH	PE
AVOCADO	AV	BROWN	BR	GRAY	GY	RED	RD
BLACK	BK	CREAM	CR	IVORY	IV	TAN	TN
BRIGHT YELLOW	BY	DARK BLUE	DB	METALLIC BLUE	MU	WHITE	WH

Awnings - 48" Length



Part #	Description	Slat Length	No. of Slats	Awning Width	Awning Coverage (Ext)	Awning Coverage (Down)
Call For Part#	27 X 48 Awning	48	9	28	48.00	44.00
Call For Part#	30 X 48 Awning	48	10	31	48.00	44.00
Call For Part#	33 X 48 Awning	48	11	34	48.00	44.00
Call For Part#	36 X 48 Awning	48	12	37	48.00	44.00
Call For Part#	39 X 48 Awning	48	13	40	48.00	44.00
Call For Part#	43 X 48 Awning	48	14	43	48.00	44.00
Call For Part#	46 X 48 Awning	48	15	46	48.00	44.00
Call For Part#	49 X 48 Awning	48	16	49	48.00	44.00
Call For Part#	52 X 48 Awning	48	17	52	48.00	44.00
Call For Part#	55 X 48 Awning	48	18	55	48.00	44.00
Call For Part#	58 X 48 Awning	48	19	58	48.00	44.00
Call For Part#	61 X 48 Awning	48	20	61	48.00	44.00
Call For Part#	64 X 48 Awning	48	21	64	48.00	44.00
Call For Part#	67 X 48 Awning	48	22	67	48.00	44.00
Call For Part#	70 X 48 Awning	48	23	70	48.00	44.00
Call For Part#	73 X 48 Awning	48	24	74	48.00	44.00
Call For Part#	77 X 48 Awning	48	25	77	48.00	44.00
Call For Part#	80 X 48 Awning	48	26	80	48.00	44.00
Call For Part#	83 X 48 Awning	48	27	83	48.00	44.00
Call For Part#	86 X 48 Awning	48	28	86	48.00	44.00
Call For Part#	89 X 48 Awning	48	29	89	48.00	44.00
Call For Part#	92 X 48 Awning	48	30	92	48.00	44.00
Call For Part#	95 X 48 Awning	48	31	95	48.00	44.00
Call For Part#	98 X 48 Awning	48	32	98	48.00	44.00
Call For Part#	101 X 48 Awning	48	33	101	48.00	44.00
Call For Part#	104 X 48 Awning	48	34	104	48.00	44.00
Call For Part#	107 X 48 Awning	48	35	107	48.00	44.00
Call For Part#	110 X 48 Awning	48	36	110	48.00	44.00
Call For Part#	113 X 48 Awning	48	37	113	48.00	44.00
Call For Part#	116 X 48 Awning	48	38	116	48.00	44.00
Call For Part#	119 X 48 Awning	48	39	119	48.00	44.00
Call For Part#	122 X 48 Awning	48	40	123	48.00	44.00
Call For Part#	126 X 48 Awning	48	41	126	48.00	44.00
Call For Part#	129 X 48 Awning	48	42	129	48.00	44.00
Call For Part#	132 X 48 Awning	48	43	132	48.00	44.00
Call For Part#	135 X 48 Awning	48	44	135	48.00	44.00
Call For Part#	138 X 48 Awning	48	45	138	48.00	44.00
Call For Part#	141 X 48 Awning	48	46	141	48.00	44.00
Call For Part#	144 X 48 Awning	48	47	144	48.00	44.00
Call For Part#	147 X 48 Awning	48	48	147	48.00	44.00
Call For Part#	150 X 48 Awning	48	49	150	48.00	44.00
Call For Part#	153 X 48 Awning	48	50	153	48.00	44.00

Note: All Dimensions in Inches

AWNINGS

Awning Colors:

COLOR	CODE	COLOR	CODE	COLOR	CODE	COLOR	CODE
AQUA	AQ	BRONZE	BZ	DARK GREEN	DG	PEACH	PE
AVOCADO	AV	BROWN	BR	GRAY	GY	RED	RD
BLACK	BK	CREAM	CR	IVORY	IV	TAN	TN
BRIGHT YELLOW	BY	DARK BLUE	DB	METALLIC BLUE	MU	WHITE	WH

Awnings - 51" Length



Part #	Description	Slat Length	No. of Slats	Awning Width	Awning Coverage (Ext)	Awning Coverage (Down)
Call For Part#	27 X 51 Awning	51	9	28	51.00	47.00
Call For Part#	30 X 51 Awning	51	10	31	51.00	47.00
Call For Part#	33 X 51 Awning	51	11	34	51.00	47.00
Call For Part#	36 X 51 Awning	51	12	37	51.00	47.00
Call For Part#	39 X 51 Awning	51	13	40	51.00	47.00
Call For Part#	43 X 51 Awning	51	14	43	51.00	47.00
Call For Part#	46 X 51 Awning	51	15	46	51.00	47.00
Call For Part#	49 X 51 Awning	51	16	49	51.00	47.00
Call For Part#	52 X 51 Awning	51	17	52	51.00	47.00
Call For Part#	55 X 51 Awning	51	18	55	51.00	47.00
Call For Part#	58 X 51 Awning	51	19	58	51.00	47.00
Call For Part#	61 X 51 Awning	51	20	61	51.00	47.00
Call For Part#	64 X 51 Awning	51	21	64	51.00	47.00
Call For Part#	67 X 51 Awning	51	22	67	51.00	47.00
Call For Part#	70 X 51 Awning	51	23	70	51.00	47.00
Call For Part#	73 X 51 Awning	51	24	74	51.00	47.00
Call For Part#	77 X 51 Awning	51	25	77	51.00	47.00
Call For Part#	80 X 51 Awning	51	26	80	51.00	47.00
Call For Part#	83 X 51 Awning	51	27	83	51.00	47.00
Call For Part#	86 X 51 Awning	51	28	86	51.00	47.00
Call For Part#	89 X 51 Awning	51	29	89	51.00	47.00
Call For Part#	92 X 51 Awning	51	30	92	51.00	47.00
Call For Part#	95 X 51 Awning	51	31	95	51.00	47.00
Call For Part#	98 X 51 Awning	51	32	98	51.00	47.00
Call For Part#	101 X 51 Awning	51	33	101	51.00	47.00
Call For Part#	104 X 51 Awning	51	34	104	51.00	47.00
Call For Part#	107 X 51 Awning	51	35	107	51.00	47.00
Call For Part#	110 X 51 Awning	51	36	110	51.00	47.00
Call For Part#	113 X 51 Awning	51	37	113	51.00	47.00
Call For Part#	116 X 51 Awning	51	38	116	51.00	47.00
Call For Part#	119 X 51 Awning	51	39	119	51.00	47.00
Call For Part#	122 X 51 Awning	51	40	123	51.00	47.00
Call For Part#	126 X 51 Awning	51	41	126	51.00	47.00
Call For Part#	129 X 51 Awning	51	42	129	51.00	47.00
Call For Part#	132 X 51 Awning	51	43	132	51.00	47.00
Call For Part#	135 X 51 Awning	51	44	135	51.00	47.00
Call For Part#	138 X 51 Awning	51	45	138	51.00	47.00
Call For Part#	141 X 51 Awning	51	46	141	51.00	47.00
Call For Part#	144 X 51 Awning	51	47	144	51.00	47.00
Call For Part#	147 X 51 Awning	51	48	147	51.00	47.00
Call For Part#	150 X 51 Awning	51	49	150	51.00	47.00
Call For Part#	153 X 51 Awning	51	50	153	51.00	47.00

Note: All Dimensions in Inches

Awning Colors:

COLOR	CODE	COLOR	CODE	COLOR	CODE	COLOR	CODE
AQUA	AQ	BRONZE	BZ	DARK GREEN	DG	PEACH	PE
AVOCADO	AV	BROWN	BR	GRAY	GY	RED	RD
BLACK	BK	CREAM	CR	IVORY	IV	TAN	TN
BRIGHT YELLOW	BY	DARK BLUE	DB	METALLIC BLUE	MU	WHITE	WH

Awnings - 54" Length



Part #	Description	Slat Length	No. of Slats	Awning Width	Awning Coverage (Ext)	Awning Coverage (Down)
Call For Part#	27 X 54 Awning	54	9	28	54.00	50.00
Call For Part#	30 X 54 Awning	54	10	31	54.00	50.00
Call For Part#	33 X 54 Awning	54	11	34	54.00	50.00
Call For Part#	36 X 54 Awning	54	12	37	54.00	50.00
Call For Part#	39 X 54 Awning	54	13	40	54.00	50.00
Call For Part#	43 X 54 Awning	54	14	43	54.00	50.00
Call For Part#	46 X 54 Awning	54	15	46	54.00	50.00
Call For Part#	49 X 54 Awning	54	16	49	54.00	50.00
Call For Part#	52 X 54 Awning	54	17	52	54.00	50.00
Call For Part#	55 X 54 Awning	54	18	55	54.00	50.00
Call For Part#	58 X 54 Awning	54	19	58	54.00	50.00
Call For Part#	61 X 54 Awning	54	20	61	54.00	50.00
Call For Part#	64 X 54 Awning	54	21	64	54.00	50.00
Call For Part#	67 X 54 Awning	54	22	67	54.00	50.00
Call For Part#	70 X 54 Awning	54	23	70	54.00	50.00
Call For Part#	73 X 54 Awning	54	24	74	54.00	50.00
Call For Part#	77 X 54 Awning	54	25	77	54.00	50.00
Call For Part#	80 X 54 Awning	54	26	80	54.00	50.00
Call For Part#	83 X 54 Awning	54	27	83	54.00	50.00
Call For Part#	86 X 54 Awning	54	28	86	54.00	50.00
Call For Part#	89 X 54 Awning	54	29	89	54.00	50.00
Call For Part#	92 X 54 Awning	54	30	92	54.00	50.00
Call For Part#	95 X 54 Awning	54	31	95	54.00	50.00
Call For Part#	98 X 54 Awning	54	32	98	54.00	50.00
Call For Part#	101 X 54 Awning	54	33	101	54.00	50.00
Call For Part#	104 X 54 Awning	54	34	104	54.00	50.00
Call For Part#	107 X 54 Awning	54	35	107	54.00	50.00
Call For Part#	110 X 54 Awning	54	36	110	54.00	50.00
Call For Part#	113 X 54 Awning	54	37	113	54.00	50.00
Call For Part#	116 X 54 Awning	54	38	116	54.00	50.00
Call For Part#	119 X 54 Awning	54	39	119	54.00	50.00
Call For Part#	122 X 54 Awning	54	40	123	54.00	50.00
Call For Part#	126 X 54 Awning	54	41	126	54.00	50.00
Call For Part#	129 X 54 Awning	54	42	129	54.00	50.00
Call For Part#	132 X 54 Awning	54	43	132	54.00	50.00
Call For Part#	135 X 54 Awning	54	44	135	54.00	50.00
Call For Part#	138 X 54 Awning	54	45	138	54.00	50.00
Call For Part#	141 X 54 Awning	54	46	141	54.00	50.00
Call For Part#	144 X 54 Awning	54	47	144	54.00	50.00
Call For Part#	147 X 54 Awning	54	48	147	54.00	50.00
Call For Part#	150 X 54 Awning	54	49	150	54.00	50.00
Call For Part#	153 X 54 Awning	54	50	153	54.00	50.00

Note: All Dimensions in Inches

AWNINGS

Awning Colors:

COLOR	CODE	COLOR	CODE	COLOR	CODE	COLOR	CODE
AQUA	AQ	BRONZE	BZ	DARK GREEN	DG	PEACH	PE
AVOCADO	AV	BROWN	BR	GRAY	GY	RED	RD
BLACK	BK	CREAM	CR	IVORY	IV	TAN	TN
BRIGHT YELLOW	BY	DARK BLUE	DB	METALLIC BLUE	MU	WHITE	WH

Awnings - 58" Length



Part #	Description	Slat Length	No. of Slats	Awning Width	Awning Coverage (Ext)	Awning Coverage (Down)
Call For Part#	27 X 58 Awning	58	9	28	58.00	54.00
Call For Part#	30 X 58 Awning	58	10	31	58.00	54.00
Call For Part#	33 X 58 Awning	58	11	34	58.00	54.00
Call For Part#	36 X 58 Awning	58	12	37	58.00	54.00
Call For Part#	39 X 58 Awning	58	13	40	58.00	54.00
Call For Part#	43 X 58 Awning	58	14	43	58.00	54.00
Call For Part#	46 X 58 Awning	58	15	46	58.00	54.00
Call For Part#	49 X 58 Awning	58	16	49	58.00	54.00
Call For Part#	52 X 58 Awning	58	17	52	58.00	54.00
Call For Part#	55 X 58 Awning	58	18	55	58.00	54.00
Call For Part#	58 X 58 Awning	58	19	58	58.00	54.00
Call For Part#	61 X 58 Awning	58	20	61	58.00	54.00
Call For Part#	64 X 58 Awning	58	21	64	58.00	54.00
Call For Part#	67 X 58 Awning	58	22	67	58.00	54.00
Call For Part#	70 X 58 Awning	58	23	70	58.00	54.00
Call For Part#	73 X 58 Awning	58	24	74	58.00	54.00
Call For Part#	77 X 58 Awning	58	25	77	58.00	54.00
Call For Part#	80 X 58 Awning	58	26	80	58.00	54.00
Call For Part#	83 X 58 Awning	58	27	83	58.00	54.00
Call For Part#	86 X 58 Awning	58	28	86	58.00	54.00
Call For Part#	89 X 58 Awning	58	29	89	58.00	54.00
Call For Part#	92 X 58 Awning	58	30	92	58.00	54.00
Call For Part#	95 X 58 Awning	58	31	95	58.00	54.00
Call For Part#	98 X 58 Awning	58	32	98	58.00	54.00
Call For Part#	101 X 58 Awning	58	33	101	58.00	54.00
Call For Part#	104 X 58 Awning	58	34	104	58.00	54.00
Call For Part#	107 X 58 Awning	58	35	107	58.00	54.00
Call For Part#	110 X 58 Awning	58	36	110	58.00	54.00
Call For Part#	113 X 58 Awning	58	37	113	58.00	54.00
Call For Part#	116 X 58 Awning	58	38	116	58.00	54.00
Call For Part#	119 X 58 Awning	58	39	119	58.00	54.00
Call For Part#	122 X 58 Awning	58	40	123	58.00	54.00
Call For Part#	126 X 58 Awning	58	41	126	58.00	54.00
Call For Part#	129 X 58 Awning	58	42	129	58.00	54.00
Call For Part#	132 X 58 Awning	58	43	132	58.00	54.00
Call For Part#	135 X 58 Awning	58	44	135	58.00	54.00
Call For Part#	138 X 58 Awning	58	45	138	58.00	54.00
Call For Part#	141 X 58 Awning	58	46	141	58.00	54.00
Call For Part#	144 X 58 Awning	58	47	144	58.00	54.00
Call For Part#	147 X 58 Awning	58	48	147	58.00	54.00
Call For Part#	150 X 58 Awning	58	49	150	58.00	54.00
Call For Part#	153 X 58 Awning	58	50	153	58.00	54.00

Note: All Dimensions in Inches

Awning Colors:

COLOR	CODE	COLOR	CODE	COLOR	CODE	COLOR	CODE
AQUA	AQ	BRONZE	BZ	DARK GREEN	DG	PEACH	PE
AVOCADO	AV	BROWN	BR	GRAY	GY	RED	RD
BLACK	BK	CREAM	CR	IVORY	IV	TAN	TN
BRIGHT YELLOW	BY	DARK BLUE	DB	METALLIC BLUE	MU	WHITE	WH

Awnings - 60" Length



Part #	Description	Slat Length	No. of Slats	Awning Width	Awning Coverage (Ext)	Awning Coverage (Down)
Call For Part#	27 X 60 Awning	60	9	28	60.00	56.00
Call For Part#	30 X 60 Awning	60	10	31	60.00	56.00
Call For Part#	33 X 60 Awning	60	11	34	60.00	56.00
Call For Part#	36 X 60 Awning	60	12	37	60.00	56.00
Call For Part#	39 X 60 Awning	60	13	40	60.00	56.00
Call For Part#	43 X 60 Awning	60	14	43	60.00	56.00
Call For Part#	46 X 60 Awning	60	15	46	60.00	56.00
Call For Part#	49 X 60 Awning	60	16	49	60.00	56.00
Call For Part#	52 X 60 Awning	60	17	52	60.00	56.00
Call For Part#	55 X 60 Awning	60	18	55	60.00	56.00
Call For Part#	58 X 60 Awning	60	19	58	60.00	56.00
Call For Part#	61 X 60 Awning	60	20	61	60.00	56.00
Call For Part#	64 X 60 Awning	60	21	64	60.00	56.00
Call For Part#	67 X 60 Awning	60	22	67	60.00	56.00
Call For Part#	70 X 60 Awning	60	23	70	60.00	56.00
Call For Part#	73 X 60 Awning	60	24	74	60.00	56.00
Call For Part#	77 X 60 Awning	60	25	77	60.00	56.00
Call For Part#	80 X 60 Awning	60	26	80	60.00	56.00
Call For Part#	83 X 60 Awning	60	27	83	60.00	56.00
Call For Part#	86 X 60 Awning	60	28	86	60.00	56.00
Call For Part#	89 X 60 Awning	60	29	89	60.00	56.00
Call For Part#	92 X 60 Awning	60	30	92	60.00	56.00
Call For Part#	95 X 60 Awning	60	31	95	60.00	56.00
Call For Part#	98 X 60 Awning	60	32	98	60.00	56.00
Call For Part#	101 X 60 Awning	60	33	101	60.00	56.00
Call For Part#	104 X 60 Awning	60	34	104	60.00	56.00
Call For Part#	107 X 60 Awning	60	35	107	60.00	56.00
Call For Part#	110 X 60 Awning	60	36	110	60.00	56.00
Call For Part#	113 X 60 Awning	60	37	113	60.00	56.00
Call For Part#	116 X 60 Awning	60	37	116	60.00	56.00
Call For Part#	119 X 60 Awning	60	38	119	60.00	56.00
Call For Part#	122 X 60 Awning	60	40	123	60.00	56.00
Call For Part#	126 X 60 Awning	60	41	126	60.00	56.00
Call For Part#	129 X 60 Awning	60	42	129	60.00	56.00
Call For Part#	132 X 60 Awning	60	43	132	60.00	56.00
Call For Part#	135 X 60 Awning	60	44	135	60.00	56.00
Call For Part#	138 X 60 Awning	60	45	138	60.00	56.00
Call For Part#	141 X 60 Awning	60	46	141	60.00	56.00
Call For Part#	144 X 60 Awning	60	47	144	60.00	56.00
Call For Part#	147 X 60 Awning	60	48	147	60.00	56.00
Call For Part#	150 X 60 Awning	60	49	150	60.00	56.00
Call For Part#	153 X 60 Awning	60	50	153	60.00	56.00

Note: All Dimensions in Inches

AWNINGS

Awning Colors:

COLOR	CODE	COLOR	CODE	COLOR	CODE	COLOR	CODE
AQUA	AQ	BRONZE	BZ	DARK GREEN	DG	PEACH	PE
AVOCADO	AV	BROWN	BR	GRAY	GY	RED	RD
BLACK	BK	CREAM	CR	IVORY	IV	TAN	TN
BRIGHT YELLOW	BY	DARK BLUE	DB	METALLIC BLUE	MU	WHITE	WH

Awnings - 63" Length



Part #	Description	Slat Length	No. of Slats	Awning Width	Awning Coverage (Ext)	Awning Coverage (Down)
Call For Part#	27 X 63 Awning	63	9	28	63.00	59.00
Call For Part#	30 X 63 Awning	63	10	31	63.00	59.00
Call For Part#	33 X 63 Awning	63	11	34	63.00	59.00
Call For Part#	36 X 63 Awning	63	12	37	63.00	59.00
Call For Part#	39 X 63 Awning	63	13	40	63.00	59.00
Call For Part#	43 X 63 Awning	63	14	43	63.00	59.00
Call For Part#	46 X 63 Awning	63	15	46	63.00	59.00
Call For Part#	49 X 63 Awning	63	16	49	63.00	59.00
Call For Part#	52 X 63 Awning	63	17	52	63.00	59.00
Call For Part#	55 X 63 Awning	63	18	55	63.00	59.00
Call For Part#	58 X 63 Awning	63	19	58	63.00	59.00
Call For Part#	61 X 63 Awning	63	20	61	63.00	59.00
Call For Part#	64 X 63 Awning	63	21	64	63.00	59.00
Call For Part#	67 X 63 Awning	63	22	67	63.00	59.00
Call For Part#	70 X 63 Awning	63	23	70	63.00	59.00
Call For Part#	73 X 63 Awning	63	24	74	63.00	59.00
Call For Part#	77 X 63 Awning	63	25	77	63.00	59.00
Call For Part#	80 X 63 Awning	63	26	80	63.00	59.00
Call For Part#	83 X 63 Awning	63	27	83	63.00	59.00
Call For Part#	86 X 63 Awning	63	28	86	63.00	59.00
Call For Part#	89 X 63 Awning	63	29	89	63.00	59.00
Call For Part#	92 X 63 Awning	63	30	92	63.00	59.00
Call For Part#	95 X 63 Awning	63	31	95	63.00	59.00
Call For Part#	98 X 63 Awning	63	32	98	63.00	59.00
Call For Part#	101 X 63 Awning	63	33	101	63.00	59.00
Call For Part#	104 X 63 Awning	63	34	104	63.00	59.00
Call For Part#	107 X 63 Awning	63	35	107	63.00	59.00
Call For Part#	110 X 63 Awning	63	36	110	63.00	59.00
Call For Part#	113 X 63 Awning	63	37	113	63.00	59.00
Call For Part#	116 X 63 Awning	63	38	116	63.00	59.00
Call For Part#	119 X 63 Awning	63	39	119	63.00	59.00
Call For Part#	122 X 63 Awning	63	40	123	63.00	59.00
Call For Part#	126 X 63 Awning	63	41	126	63.00	59.00
Call For Part#	129 X 63 Awning	63	42	129	63.00	59.00
Call For Part#	132 X 63 Awning	63	43	132	63.00	59.00
Call For Part#	135 X 63 Awning	63	44	135	63.00	59.00
Call For Part#	138 X 63 Awning	63	45	138	63.00	59.00
Call For Part#	141 X 63 Awning	63	46	141	63.00	59.00
Call For Part#	144 X 63 Awning	63	47	144	63.00	59.00
Call For Part#	147 X 63 Awning	63	48	147	63.00	59.00
Call For Part#	150 X 63 Awning	63	49	150	63.00	59.00
Call For Part#	153 X 63 Awning	63	50	153	63.00	59.00

Note: All Dimensions in Inches

Awning Colors:

COLOR	CODE	COLOR	CODE	COLOR	CODE	COLOR	CODE
AQUA	AQ	BRONZE	BZ	DARK GREEN	DG	PEACH	PE
AVOCADO	AV	BROWN	BR	GRAY	GY	RED	RD
BLACK	BK	CREAM	CR	IVORY	IV	TAN	TN
BRIGHT YELLOW	BY	DARK BLUE	DB	METALLIC BLUE	MU	WHITE	WH

Awnings - 66" Length



Part #	Description	Slat Length	No. of Slats	Awning Width	Awning Coverage (Ext)	Awning Coverage (Down)
Call For Part#	27 X 66 Awning	66	9	28	66.00	62.00
Call For Part#	30 X 66 Awning	66	10	31	66.00	62.00
Call For Part#	33 X 66 Awning	66	11	34	66.00	62.00
Call For Part#	36 X 66 Awning	66	12	37	66.00	62.00
Call For Part#	39 X 66 Awning	66	13	40	66.00	62.00
Call For Part#	43 X 66 Awning	66	14	43	66.00	62.00
Call For Part#	46 X 66 Awning	66	15	46	66.00	62.00
Call For Part#	49 X 66 Awning	66	16	49	66.00	62.00
Call For Part#	52 X 66 Awning	66	17	52	66.00	62.00
Call For Part#	55 X 66 Awning	66	18	55	66.00	62.00
Call For Part#	58 X 66 Awning	66	19	58	66.00	62.00
Call For Part#	61 X 66 Awning	66	20	61	66.00	62.00
Call For Part#	64 X 66 Awning	66	21	64	66.00	62.00
Call For Part#	67 X 66 Awning	66	22	67	66.00	62.00
Call For Part#	70 X 66 Awning	66	23	70	66.00	62.00
Call For Part#	73 X 66 Awning	66	24	74	66.00	62.00
Call For Part#	77 X 66 Awning	66	25	77	66.00	62.00
Call For Part#	80 X 66 Awning	66	26	80	66.00	62.00
Call For Part#	83 X 66 Awning	66	27	83	66.00	62.00
Call For Part#	86 X 66 Awning	66	28	86	66.00	62.00
Call For Part#	89 X 66 Awning	66	29	89	66.00	62.00
Call For Part#	92 X 66 Awning	66	30	92	66.00	62.00
Call For Part#	95 X 66 Awning	66	31	95	66.00	62.00
Call For Part#	98 X 66 Awning	66	32	98	66.00	62.00
Call For Part#	101 X 66 Awning	66	33	101	66.00	62.00
Call For Part#	104 X 66 Awning	66	34	104	66.00	62.00
Call For Part#	107 X 66 Awning	66	35	107	66.00	62.00
Call For Part#	110 X 66 Awning	66	36	110	66.00	62.00
Call For Part#	113 X 66 Awning	66	37	113	66.00	62.00
Call For Part#	116 X 66 Awning	66	38	116	66.00	62.00
Call For Part#	119 X 66 Awning	66	39	119	66.00	62.00
Call For Part#	122 X 66 Awning	66	40	123	66.00	62.00
Call For Part#	126 X 66 Awning	66	41	126	66.00	62.00
Call For Part#	129 X 66 Awning	66	42	129	66.00	62.00
Call For Part#	132 X 66 Awning	66	43	132	66.00	62.00
Call For Part#	135 X 66 Awning	66	44	135	66.00	62.00
Call For Part#	138 X 66 Awning	66	45	138	66.00	62.00
Call For Part#	141 X 66 Awning	66	46	141	66.00	62.00
Call For Part#	144 X 66 Awning	66	47	144	66.00	62.00
Call For Part#	147 X 66 Awning	66	48	147	66.00	62.00
Call For Part#	150 X 66 Awning	66	49	150	66.00	62.00
Call For Part#	153 X 66 Awning	66	50	153	66.00	62.00

Note: All Dimensions in Inches

AWNINGS

Awning Colors:

COLOR	CODE	COLOR	CODE	COLOR	CODE	COLOR	CODE
AQUA	AQ	BRONZE	BZ	DARK GREEN	DG	PEACH	PE
AVOCADO	AV	BROWN	BR	GRAY	GY	RED	RD
BLACK	BK	CREAM	CR	IVORY	IV	TAN	TN
BRIGHT YELLOW	BY	DARK BLUE	DB	METALLIC BLUE	MU	WHITE	WH

Awnings - 72" Length



Part #	Description	Slat Length	No. of Slats	Awning Width	Awning Coverage (Ext)	Awning Coverage (Down)
Call For Part#	27 X 72 Awning	72	9	28	72.00	68.00
Call For Part#	30 X 72 Awning	72	10	31	72.00	68.00
Call For Part#	33 X 72 Awning	72	11	34	72.00	68.00
Call For Part#	36 X 72 Awning	72	12	37	72.00	68.00
Call For Part#	39 X 72 Awning	72	13	40	72.00	68.00
Call For Part#	43 X 72 Awning	72	14	43	72.00	68.00
Call For Part#	46 X 72 Awning	72	15	46	72.00	68.00
Call For Part#	49 X 72 Awning	72	16	49	72.00	68.00
Call For Part#	52 X 72 Awning	72	17	52	72.00	68.00
Call For Part#	55 X 72 Awning	72	18	55	72.00	68.00
Call For Part#	58 X 72 Awning	72	19	58	72.00	68.00
Call For Part#	61 X 72 Awning	72	20	61	72.00	68.00
Call For Part#	64 X 72 Awning	72	21	64	72.00	68.00
Call For Part#	67 X 72 Awning	72	22	67	72.00	68.00
Call For Part#	70 X 72 Awning	72	23	70	72.00	68.00
Call For Part#	73 X 72 Awning	72	24	74	72.00	68.00
Call For Part#	77 X 72 Awning	72	25	77	72.00	68.00
Call For Part#	80 X 72 Awning	72	26	80	72.00	68.00
Call For Part#	83 X 72 Awning	72	27	83	72.00	68.00
Call For Part#	86 X 72 Awning	72	28	86	72.00	68.00
Call For Part#	89 X 72 Awning	72	29	89	72.00	68.00
Call For Part#	92 X 72 Awning	72	30	92	72.00	68.00
Call For Part#	95 X 72 Awning	72	31	95	72.00	68.00
Call For Part#	98 X 72 Awning	72	32	98	72.00	68.00
Call For Part#	101 X 72 Awning	72	33	101	72.00	68.00
Call For Part#	104 X 72 Awning	72	34	104	72.00	68.00
Call For Part#	107 X 72 Awning	72	35	107	72.00	68.00
Call For Part#	110 X 72 Awning	72	36	110	72.00	68.00
Call For Part#	113 X 72 Awning	72	37	113	72.00	68.00
Call For Part#	116 X 72 Awning	72	38	116	72.00	68.00
Call For Part#	119 X 72 Awning	72	39	119	72.00	68.00
Call For Part#	122 X 72 Awning	72	40	123	72.00	68.00
Call For Part#	126 X 72 Awning	72	41	126	72.00	68.00
Call For Part#	129 X 72 Awning	72	42	129	72.00	68.00
Call For Part#	132 X 72 Awning	72	43	132	72.00	68.00
Call For Part#	135 X 72 Awning	72	44	135	72.00	68.00
Call For Part#	138 X 72 Awning	72	45	138	72.00	68.00
Call For Part#	141 X 72 Awning	72	46	141	72.00	68.00
Call For Part#	144 X 72 Awning	72	47	144	72.00	68.00
Call For Part#	147 X 72 Awning	72	48	147	72.00	68.00
Call For Part#	150 X 72 Awning	72	49	150	72.00	68.00
Call For Part#	153 X 72 Awning	72	50	153	72.00	68.00

Note: All Dimensions in Inches

Awning Colors:

COLOR	CODE	COLOR	CODE	COLOR	CODE	COLOR	CODE
AQUA	AQ	BRONZE	BZ	DARK GREEN	DG	PEACH	PE
AVOCADO	AV	BROWN	BR	GRAY	GY	RED	RD
BLACK	BK	CREAM	CR	IVORY	IV	TAN	TN
BRIGHT YELLOW	BY	DARK BLUE	DB	METALLIC BLUE	MU	WHITE	WH

Awnings - 76" Length



Part #	Description	Slat Length	No. of Slats	Awning Width	Awning Coverage (Ext)	Awning Coverage (Down)
Call For Part#	27 X 76 Awning	76	9	28	76.00	72.00
Call For Part#	30 X 76 Awning	76	10	31	76.00	72.00
Call For Part#	33 X 76 Awning	76	11	34	76.00	72.00
Call For Part#	36 X 76 Awning	76	12	37	76.00	72.00
Call For Part#	39 X 76 Awning	76	13	40	76.00	72.00
Call For Part#	43 X 76 Awning	76	14	43	76.00	72.00
Call For Part#	46 X 76 Awning	76	15	46	76.00	72.00
Call For Part#	49 X 76 Awning	76	16	49	76.00	72.00
Call For Part#	52 X 76 Awning	76	17	52	76.00	72.00
Call For Part#	55 X 76 Awning	76	18	55	76.00	72.00
Call For Part#	58 X 76 Awning	76	19	58	76.00	72.00
Call For Part#	61 X 76 Awning	76	20	61	76.00	72.00
Call For Part#	64 X 76 Awning	76	21	64	76.00	72.00
Call For Part#	67 X 76 Awning	76	22	67	76.00	72.00
Call For Part#	70 X 76 Awning	76	23	70	76.00	72.00
Call For Part#	73 X 76 Awning	76	24	74	76.00	72.00
Call For Part#	77 X 76 Awning	76	25	77	76.00	72.00
Call For Part#	80 X 76 Awning	76	26	80	76.00	72.00
Call For Part#	83 X 76 Awning	76	27	83	76.00	72.00
Call For Part#	86 X 76 Awning	76	28	86	76.00	72.00
Call For Part#	89 X 76 Awning	76	29	89	76.00	72.00
Call For Part#	92 X 76 Awning	76	30	92	76.00	72.00
Call For Part#	95 X 76 Awning	76	31	95	76.00	72.00
Call For Part#	98 X 76 Awning	76	32	98	76.00	72.00
Call For Part#	101 X 76 Awning	76	33	101	76.00	72.00
Call For Part#	104 X 76 Awning	76	34	104	76.00	72.00
Call For Part#	107 X 76 Awning	76	35	107	76.00	72.00
Call For Part#	110 X 76 Awning	76	36	110	76.00	72.00
Call For Part#	113 X 76 Awning	76	37	113	76.00	72.00
Call For Part#	116 X 76 Awning	76	38	116	76.00	72.00
Call For Part#	119 X 76 Awning	76	39	119	76.00	72.00
Call For Part#	122 X 76 Awning	76	40	123	76.00	72.00
Call For Part#	126 X 76 Awning	76	41	126	76.00	72.00
Call For Part#	129 X 76 Awning	76	42	129	76.00	72.00
Call For Part#	132 X 76 Awning	76	43	132	76.00	72.00
Call For Part#	135 X 76 Awning	76	44	135	76.00	72.00
Call For Part#	138 X 76 Awning	76	45	138	76.00	72.00
Call For Part#	141 X 76 Awning	76	46	141	76.00	72.00
Call For Part#	144 X 76 Awning	76	47	144	76.00	72.00
Call For Part#	147 X 76 Awning	76	48	147	76.00	72.00
Call For Part#	150 X 76 Awning	76	49	150	76.00	72.00
Call For Part#	153 X 76 Awning	76	50	153	76.00	72.00

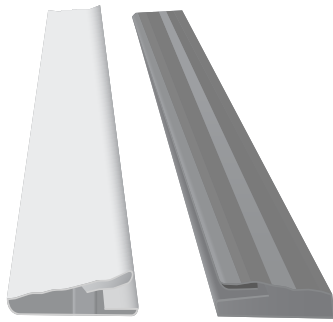
Note: All Dimensions in Inches

AWNINGS

Awning Colors:

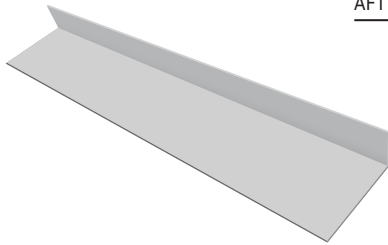
COLOR	CODE	COLOR	CODE	COLOR	CODE	COLOR	CODE
AQUA	AQ	BRONZE	BZ	DARK GREEN	DG	PEACH	PE
AVOCADO	AV	BROWN	BR	GRAY	GY	RED	RD
BLACK	BK	CREAM	CR	IVORY	IV	TAN	TN
BRIGHT YELLOW	BY	DARK BLUE	DB	METALLIC BLUE	MU	WHITE	WH

**Kick Plate Channel
(Roll Form)**



Part #	Description	Colors	Gauge/ Thickness	Piece Length	Pieces/ Bundle
AKP10T - -	Aluminum 10'	WH/BZ	0.024	10'	25
AKP12T - -	Aluminum 12'	WH/BZ	0.024	12'	25

Finish Trim



Part #	Description	Colors	Gauge/ Thickness	Piece Length	Pieces/ Bundle
AFTTWH	Aluminum 1" x 2" x 11-7/8"	WH	0.030	11-7/8"	25

Patio Accessories Colors:

COLOR	CODE
BRONZE	BZ
WHITE	WH

Manufactured in the USA

American Construction Metals (ACM) products are Manufactured in the USA. ACM takes pride in being an American-based company with its five plants located in the continental United States. The Core Purpose of the company is dedicated to promoting and preserving the American Dream.

Logistics

Weekly route trucking is a standard at ACM to ensure prompt shipping and delivery. We make ordering easy with a weekly standard order date which allows for the following week shipment. If you need a product sooner, just give customer service a call so we can make arrangements.

Customer Service

ACM is dedicated to providing the best customer service to our customers. Our customer service team's daily goal is to maintain relationships with our customers and supply information regarding the products and status of your order.

Quality Products

ACM employees put pride and workmanship in the products that they manufacture, from right off the line, to the way they are crated and packed on the route truck. We want to insure the best quality from start to finish.



valspar

Valspar Polykote 3000 coatings are field proven polyester finishes designed specifically for long life products such as residential siding, rain carrying equipment, trim coil, and building accessories. This coating system provides the reliable combination of hardness, adhesion, and flexibility properties required to maintain the paint finish's appearance and durability. Additional field performance advantages of Polykote 3000 include stain resistance, metal mark resistant, and self cleaning characteristics to give the coating minimal maintenance for the extended life of the product.



AMERICAN CONSTRUCTION METALS

ACM Beloit
1600 Park Avenue
Beloit, WI 53511
608-365-0296 phone
608-365-0493 fax

ACM Houston
11615 Brittmoores Park Drive
Houston, TX 77041
713-466-1797 phone
713-466-5404 fax

ACM Lodi
1307 E. Pine Street
Lodi, CA 95241
209-334-1489 phone
209-334-4589 fax

ACM Tampa
5140 West Clifton Street
Tampa, FL 33634
813-884-0444 phone
813-881-1738 fax
608-364-5092 e-fax

www.acm-metals.com