



CORONADO[®]

STONE PRODUCTS



PRODUCT SELECTION GUIDE

BlueLinx
America's Largest Building Products Distributor

TUSCAN VILLA®



COLOR: FLORENTINE



COLOR: ROMANO



COLOR: PRAIRIE MOSS

OLD COUNTRY LEDGE



COLOR: BROOKSIDE



COLOR: CHABLIS



COLOR: DAKOTA BROWN

QUICK STACK®



COLOR: ASPEN



COLOR: CARMEL MOUNTAIN



COLOR: SIOUX FALLS

EASTERN MOUNTAIN LEDGE®



COLOR: CARMEL MOUNTAIN



COLOR: CHABLIS



COLOR: MADISON COUNTY

COUNTRY RUBBLE



COLOR: ASPEN



COLOR: COASTAL BROWN



COLOR: TEXAS CREAM

2½"X 8" SPECIAL USED BRICK



COLOR: RUSTIC BLEND

- A large variety of stone profiles, colors and accessories always in stock.
- Access to over 500 products on a special order basis.
- Quality proven over 50 years of manufacturing.
- Extremely realistic textures and colors.

COVER PHOTO: COUNTRY RUBBLE COLOR: TEXAS CREAM



COUNTRY RUBBLE

COLOR: COASTAL BROWN



QUICK STACK®

COLOR: CARMEL MOUNTAIN



QUICK STACK®

COLOR: CARMEL MOUNTAIN



COUNTRY RUBBLE

COLOR: TEXAS CREAM



TUSCAN VILLA®

COLOR: FLORENTINE



OLD COUNTRY LEDGE

COLOR: CHABLIS



QUICK STACK®

COLOR: CARMEL MOUNTAIN

ACCESSORIES



CHISELED STONE SILL / WAINSCOTE



HEARTHSTONE



ELECTRICAL BOX

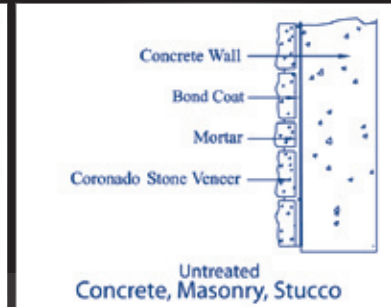
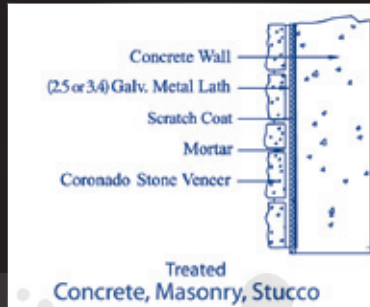
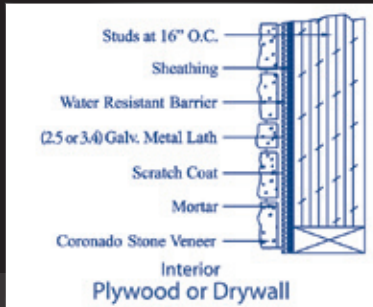


LIGHT BOX

COMPLIMENTARY COLOR CHART

Accessory Color		Style Color
Aspen		Aspen, Chablis, Coastal Brown, Madison County, Prairie Moss
Brownstone		Brookside, Carmel Mt., Chablis, Coastal Brown, Dakota Brown, Florentine, Prairie Moss, Romano, Sioux Falls
Light Grey		Grey Quartzite
Texas Cream		Texas Cream

TYPES OF INSTALLATIONS



BASIC INSTALLATION INSTRUCTIONS



FIG. 1



FIG. 2



FIG. 3



FIG. 4

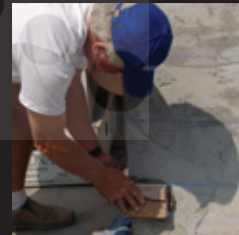


FIG. 5



FIG. 6

- (Fig. 1) Apply a 3/8 in. layer of scratch coat to prepared surface. Scratch the plastered surface with wire lath or a hand rake while it is still wet. This will ensure that the surface is not too smooth and will allow proper adhesion between the stone and wall.
- (Fig. 2) After the scratch coat has dried, mark both sides of the wall at 8 in. intervals in preparation for chalk lines. (Note: The ground below the installation may be uneven so a level may need to be utilized.)
- (Fig. 3) Snapping chalk lines at 8 in. intervals will ensure that the courses of stone are installed straight and level.
- (Fig. 4) Apply 1/2 in. of mortar to the back of each stone and distribute it from front to back using the lead edge of the trowel. (Note: Too much mortar can cause slipping.)
- (Fig. 5) Start at the bottom corner installing one or two corner stones. Corner stones have long and short returns which should be alternated throughout the installation. (Note: Start the first stone above ground to ensure a level installation.)
- (Fig. 6) While installing the first course of flats move the stone side to side, this will help the stone create a better bond to the wall surface. To avoid creating long vertical and horizontal joints, stagger stones in an ashlar pattern leaving at least a 2 in. offset on vertical joints.

BlueLinx
America's Largest Building Products Distributor

1-888-502-BLUE (2583)

4300 Wildwood Pkwy • Atlanta, GA 30339

ContactUs@BlueLinxCo.com

www.BlueLinxco.com

50 YEAR LIMITED WARRANTY

Due to photographic and printing variations, colors may not be accurate. We suggest examination of Coronado Stone® product samples prior to purchase. BLUELINX and the BLUELINX design are trademarks and registered servicemarks of the BlueLinx Services Inc.