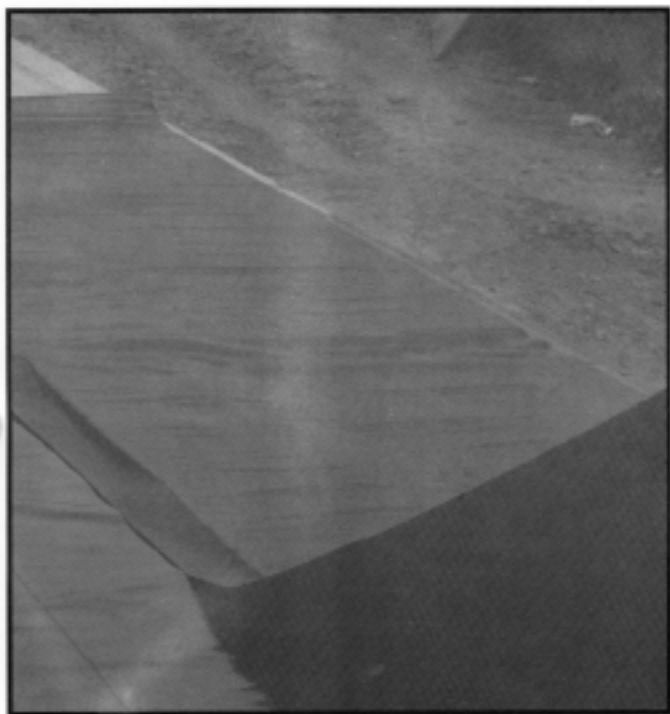




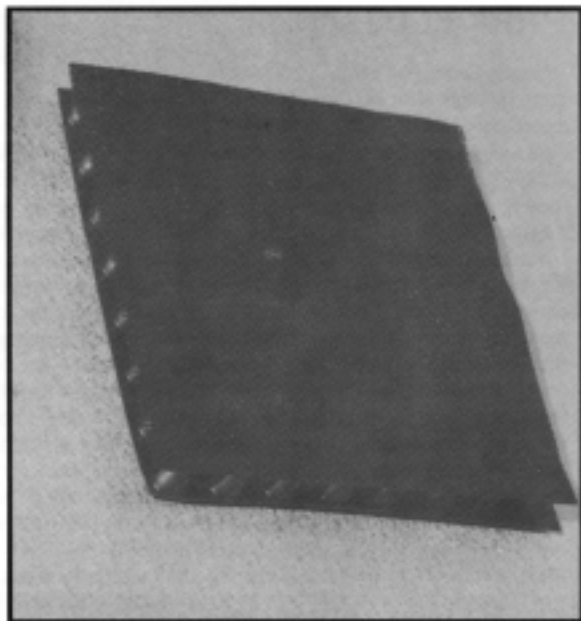
Premium Building Products
That Protect

Protecto[®] DRAIN 2000

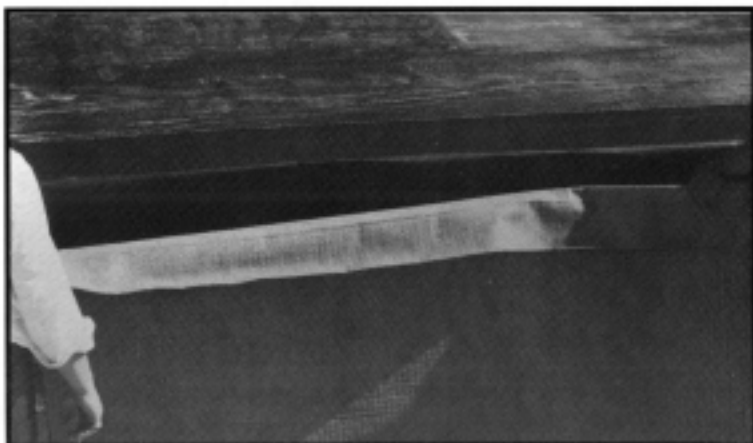
PREFABRICATED DRAINAGE SYSTEMS



Protecto Drain 2000-H



Dimpled Drainage Boards for
Verticle and Horizontal Applications



Protecto Drain 2000-V

Protecto[®] DRAIN 2000

Product Description

Protecto Drain 2000-V and 2000-H are prefabricated, high-compression, dimpled drainage boards which have been specifically designed for single sided sub-surface drainage. The light weight construction allows excellent conformability to a wide variety of applications where space and construction constraints may otherwise exclude traditional aggregate systems. The geotextile fabric on the front allows water to seep between the raised dimples and flow to the footing out flow pipe or deck drain for removal. The fabric also maintains the open area between the dimples from clogging with dirt, silt or other elements that could lower the flow rate. Protecto Drain 2000 reduces hydrostatic pressure and conveys ground water away from the structure while acting as both a drainage board and protection board for Jiffy Seal reinforced waterproofing membrane. Applications range from vertical foundations or retaining walls to very complex plaza decks and high water table installations. The dimples interlock for ease of application as well as to form a continuous drainage-protection course over the entire substrate. Protecto Drain 2000 offers the design professional a modern and cost effective drainage alternative to the conventional aggregate drainage systems.

Protecto Drain 2000 Advantages

- Reduces Hydrostatic Pressure
- High Compressive Strength
- High Flow Rates
- Inert - Inorganic - Will not rot or decay when covered
- Positive Drainage, no guess work, no mess as with conventional aggregate systems
- Ease of application, minimizes labor
- Performs as both a drainage system and a protection board for Jiffy Seal Waterproofing Systems.
- One source warranties - both waterproofing and protection-drainage board guaranteed by Protecto Wrap Company.
- Competitively Priced
- Interlocking dimples turn panels into continuous drainage-protection course.
- Wearing Course/Backfill can be place immediately after installation.
- Compatible with Protecto Wrap Company's Jiffy Seal Waterproofing System.

Product Use

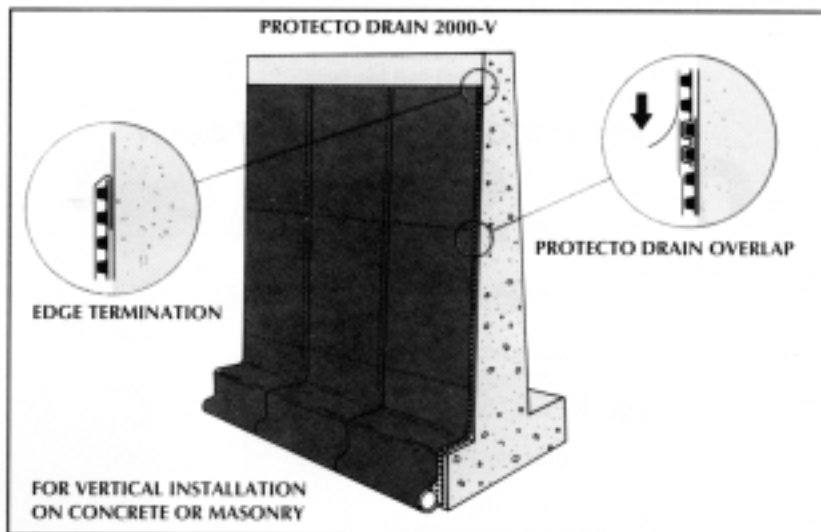
Protecto Drain 2000-V is designed for vertical applications. Installations include:

- Foundations/Basement walls
- Retaining Walls
- Bridge Abutments
- Shoring - Lagging
- Earthen Berms
- Planter Boxes
- Behind Shot Crete

After application of Jiffy Seal reinforced waterproofing membrane, unroll the Protecto Drain 2000-V and place against the surface with the flat side of the panel facing the wall. Attach to the Jiffy Seal waterproofing membrane using mastic, two-sided tape etc. To interlock panels,

peel back the non-woven fabric approximately three inches and press at least two rows of exposed dimples into the dimples of the adjoining panel. At the base of the system position Protecto Drain 2000-V in a manner so that the core is placed behind the perimeter drain and the excess fabric covers the pipe. Backfill as soon as possible.

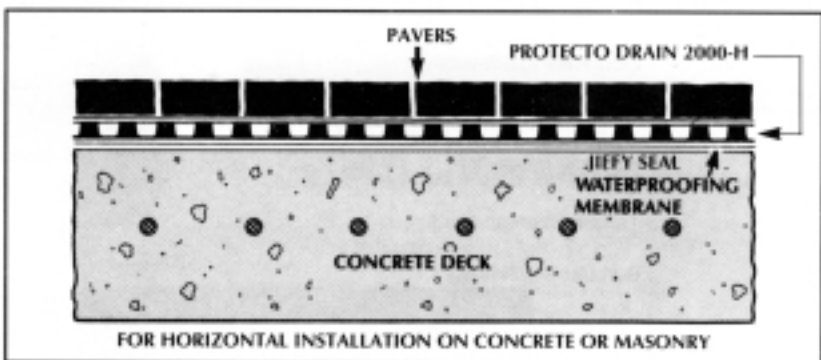
NOTE: Protecto Drain 2000-V acts as both a drainage board and a protection course for Jiffy Seal Waterproofing Membranes.



Protecto Drain 2000-H is designed for horizontal applications. Installations include:

- Plaza Decks (Split Slab)
- Beneath Pavers
- Parking Structures
- Earth Shelter Houses

Begin laying Protecto Drain 2000-H from the low side of the deck to the high side or lay from the drain out. Interlock panels in the same manner as vertical applications. Protecto Drain 2000-H placed over Jiffy Seal not only augments the waterproofing function but also protects the membrane from damage. At the borders of the system, tuck the excess fabric under the edge of the panels. If Re-bar chairs or supports are used, they must be placed on plates to better distribute the load. Protecto Drain 2000-H may be covered with the final wearing course immediately after installation.



Packaging

Protecto Drain 2000 is available in rolls 4' x 52' (208 square feet).

Typical Physical Properties

PROTECTO DRAIN PRODUCT 2000-V

	<u>Value</u>	<u>Test Method</u>
Compressive Strength (psf)	15,000	ASTM D-1621
Flow Rate (gal/ft-width)	15	ASTM D-4716
Thickness (inches)	.38	ASTM D-1777
<u>NONWOVEN FABRIC</u>		
Tensile Strength (lbs.)	100	ASTM D-4632
Burst Strength (lbs.)	240	ASTM D-3786
Permeability (cm/sec)	.2	ASTM D-4491
AOS/EOS (US Std. Sieve)	70+	CW-02215

PROTECTO DRAIN PRODUCT 2000-H

	<u>Value</u>	<u>Test Method</u>
Compressive Strength (psf)	18,000	ASTM D-1621
Flow Rate (gal/ft-width)	15	ASTM D-4716
Thickness (inches)	.38	ASTM D-1777
<u>WOVEN FABRIC</u>		
Tensile Strength (lbs.)	400/250	ASTM D-4632
Burst Strength (lbs.)	500	ASTM D-3786
Permeability (cm/sec)	.02	ASTM D-4491
AOS/EOS (US Std. Sieve)	70-100	CW-02215

Take the guess work out of your waterproofing-drainage system needs. Come to the professionals at Protecto Wrap Company. For more information or questions please contact Protecto Wrap Company.



Premium Building Products
That Protect

Protecto Wrap Company

1955 South Cherokee Street
Denver, Colorado 80223 U.S.A.
(303) 777-3001 FAX (303)-777-9273
(800) 759-9727