

BlueLinx

America's Largest Building Products Distributor



“Getting the Right Product to the Right Place at the Right Time”

George Judd – Chief Executive Officer

Safe Harbor Statement and Use of Non-GAAP and Pro Forma Information

Forward-Looking Statement Safe Harbor - This presentation includes "forward-looking statements" within the meaning of the Private Securities Litigation Reform Act of 1995. All of these forward-looking statements are based on estimates and assumptions made by our management that, although believed by BlueLinx to be reasonable, are inherently uncertain. Forward-looking statements involve risks and uncertainties, including, but not limited to, economic, competitive, governmental and technological factors outside of its control, that may cause our business, strategy or actual results to differ materially from the forward-looking statements. These risks and uncertainties may include, among other things: changes in the supply and/or demand for products which we distribute, especially as a result of conditions in the residential housing market; general economic and business conditions in the United States; the activities of competitors; changes in significant operating expenses; changes in the availability of capital; the ability to identify acquisition opportunities and effectively and cost-efficiently integrate acquisitions; general economic and business conditions in the United States; adverse weather patterns or conditions; acts of war or terrorist activities; variations in the performance of the financial markets; and other factors described in the "Risk Factors" section in the Company's Annual Report on Form 10-K for the fiscal year ended December 30, 2008, and in its periodic reports filed with the SEC. In addition, the statements in this presentation are made as of September 11, 2009. The Company expects that subsequent events or developments will cause its views to change. The Company undertakes no obligation to update any of the forward-looking statements made herein, whether as a result of new information, future events, changes in expectation or otherwise. These forward-looking statements should not be relied upon as representing the Company's views as of any date subsequent to September 11, 2009.

Use of Non-GAAP and Pro Forma* Financial Information - To supplement GAAP financial statements, the Company uses non-GAAP, or pro forma measures of operating results. This non-GAAP, or pro forma financial information is provided as additional information for investors and is not in accordance with or an alternative to GAAP. These adjusted results exclude certain costs, expenses, gains and losses, and we believe their exclusion can enhance an overall understanding of our past financial performance and also our prospects for the future. These adjustments to our GAAP results are made with the intent of providing both management and investors a more complete understanding of the operating performance of the Company as opposed to GAAP results, which may include non-recurring, infrequent or other non-cash charges that are not material to the ongoing performance of the Company's business. Company management uses these non-GAAP and pro forma results as a basis for planning and forecasting core business activity in future periods. The presentation of this additional information is not meant to be considered in isolation or as a substitute for net earnings, diluted earnings per share or net cash provided by (used in) operating activities prepared in accordance with generally accepted accounting principles in the United States.

BlueLinx Overview:

- Leading Building Products Distributor in U.S.
- 2008 Revenue: \$2.8 Billion
- ~ 11,500 customers and 750+ suppliers
- Product portfolio 10,000+ SKUs
- 70+ warehouses; 80+ reloads
- Owned fleet of 600+ trucks and 1,000+ trailers
- ~2,000 employees, including ~500 sales



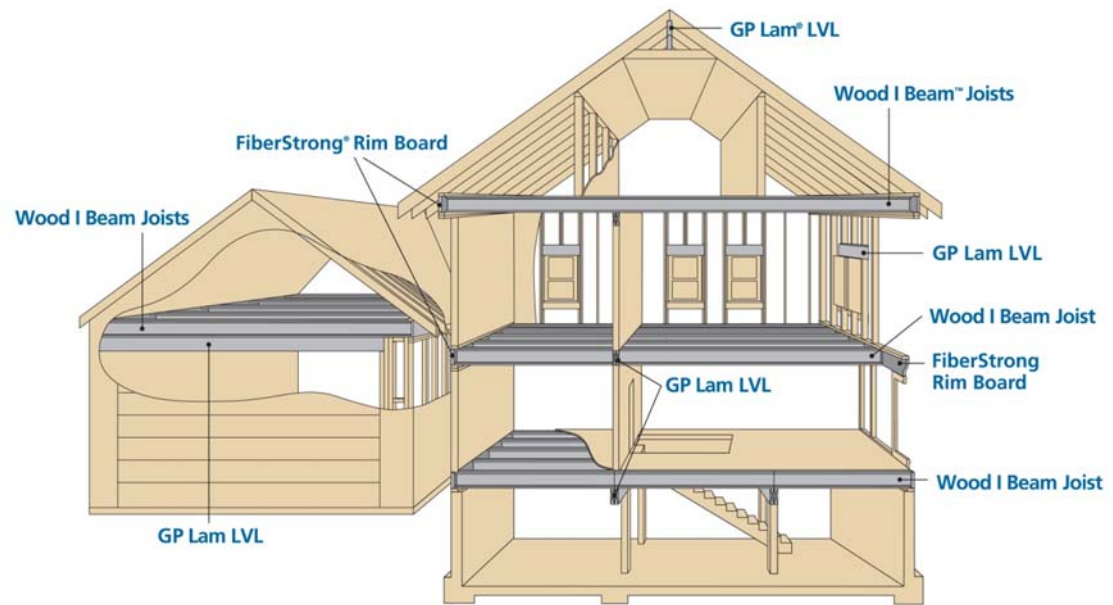
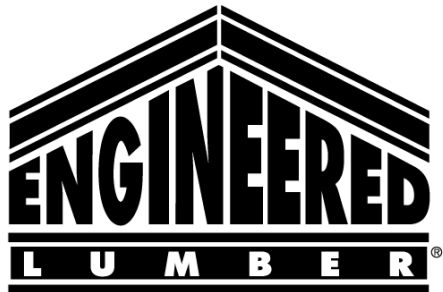
The Right Products...



www.BlueLinxCo.com/Specifiers

- Wide breadth of products used in both **Residential** & **Commercial** construction
- **Global Sourcing** with quality assurance drives down costs
- Large % of the products we sell carry **Green Certifications**
- Source of info & specs on over **10,000** products with **70,000** SKU's

Engineered Lumber



Georgia-Pacific Engineered Lumber®

- Utilizes renewable resources: Efficient use of wood fiber with consistent, strict manufacturing
- Engineered to be strong, stiff & consistent
- Meets longer span requirements than most conventional lumber, allowing for larger & more open spaces
- Eliminates shrinking, twisting & warping that can lead to uneven, squeaky framing
- “Green Approved” by the NAHB Research Center



The Right Products...

XJ 85® Joists

- Lightweight, easy to install & field trimmable
- “Green Approved” by the NAHB Research Center
- 4x2 flange, 5/8” OSB web with pre-fab web openings for plumbing & electrical drops
- 2’ chase at mid-span for ductwork to run in conditioned space – reducing HVAC costs



Hebel® Autoclaved Aerated Concrete (AAC)

- 8” x 8” x 24” ultra light solid concrete block for load bearing walls (R-value of 10)
- 2’ x 2’ x 4” panel for shaft liner (4” thickness = 4 hr UL fire-rating)

Grant RainBLOCK®

- Holds SFI and TECO Certifications
- Grant RainBLOCK comes with a 300 day no sand warranty & lifetime limited product warranty





Hardy Frame® Panel

- Prefabricated steel shear panel for shear walls
- Allowable shear loads of up to 3300 pounds per foot

LiteSteel® beam

- Patented, cold rolled steel beam can often replace hot rolled steel
- Cut with a handheld circular saw, carried and hoisted manually
- Beam by other



Nichiha® Siding

- LEED credits available by using Nichiha Siding, also meets NAHB Green Home Building Guidelines for possible points
- Withstands greater than 150 mph (3 second gusts) sustainable winds¹ - ASTM E 330



Shiloh Kelly
National Sustainability Lead
(303) 706-8049

PureBlue™

BlueLinX sustainability program & portfolio brand of eco-products

Mission

To deliver building products and services that are economical and sustainable, while promoting ecologically conscious construction

Forestry

Our Responsible Wood Purchasing Program, ensures high performance, quality materials that do not contribute to the degradation of forests

Products

We sell a wide range of products that carry green certifications and we are dedicated to being an information resource you can count on

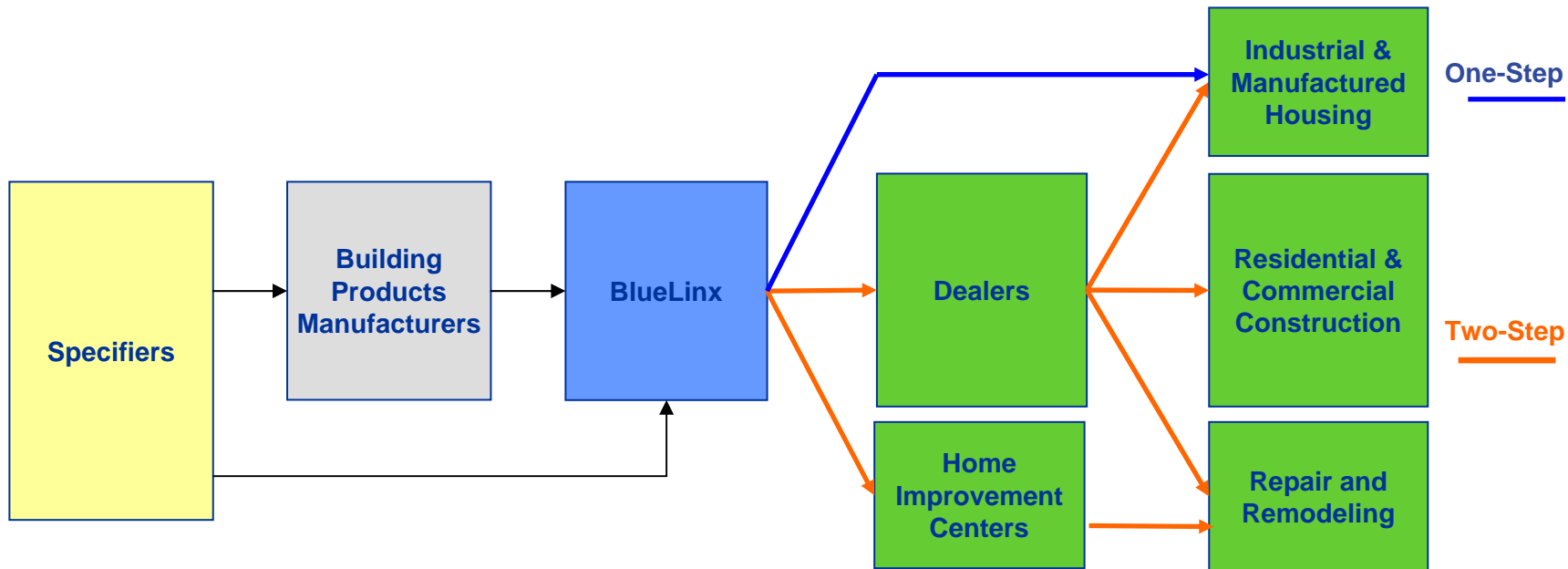
Value Prop

As a national distributor of over 10,000 building products, we deliver a substantial breadth of products from local facilities on one truck (saving labor, transportation, & fossil fuels)

Chain of Custody

We have FSC Certified locations across the United States, to provide customers with a secure chain of custody nation wide

Product resources, knowledgeable staff & nationwide foot print make us a valuable partner to ensuring the **products you specify** make it to the **right place** at the **right time**.



Value to Specifiers

- Vast resource for product knowledge, technical specifications, and green information
- Large staff of registered engineers, architects, and a LEED AP to help assist you
- Provide free useful training and software

Value to Manufacturers

- Reliable channels to market
- Limits inventory investment
- Instant access to all markets across the country

BlueLinx' 70+ locations are positioned in high growth areas allowing us to get the **right products** to the **right place** at the **right time**.

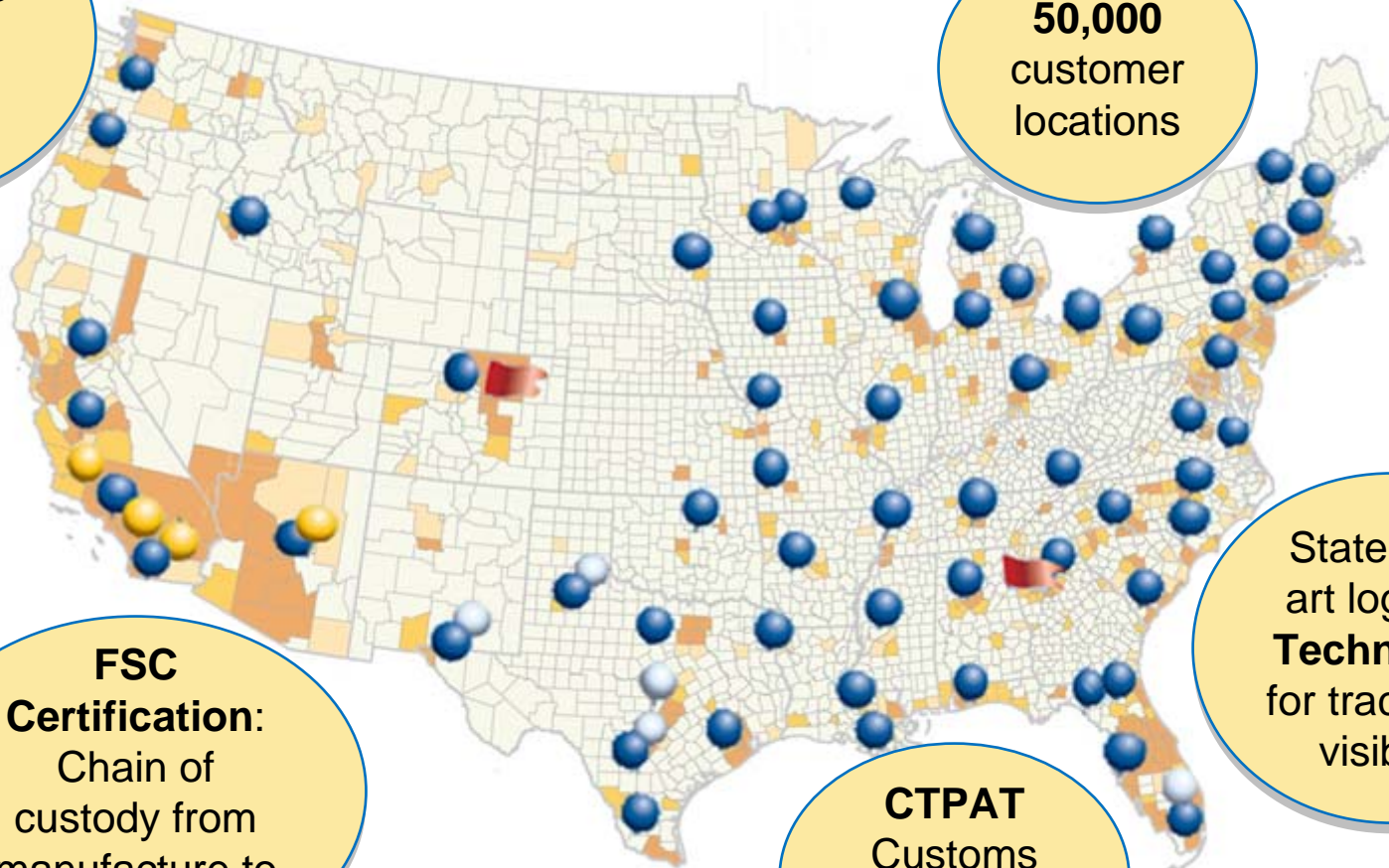
98% Fill Rates w/ the industries largest private fleet

50,000 customer locations

FSC Certification:
Chain of custody from manufacture to end user

CTPAT
Customs "Fast Pass" for Imports

State of the art logistics **Technology** for tracking & visibility



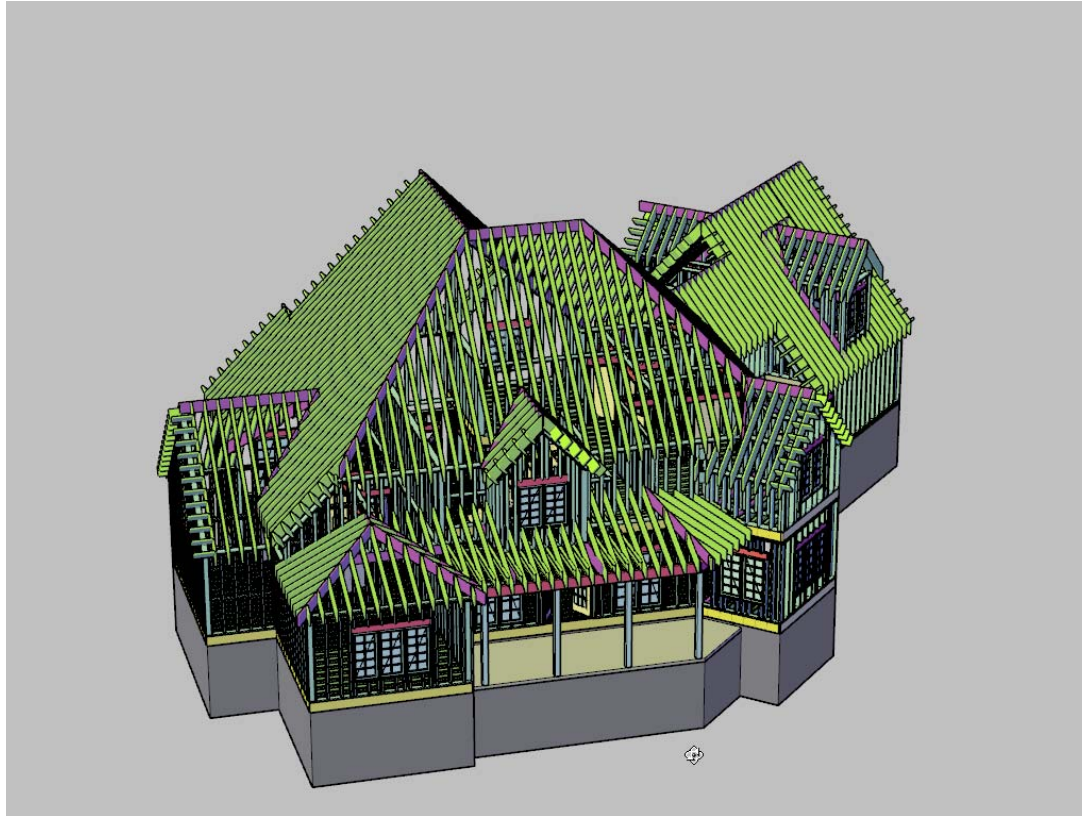
Working with Specifiers

- **Plan group that works with builders and specifiers to spec our engineered products**
 - Our technical services group processes thousands of plans per year.
 - We have a large staff of architects and professional engineers registered in 45 states combined
- **We offer 3 AIA classes worth 1 hour of credit each**
 - Engineered Lumber 101: Specifying Engineered Lumber
 - Introduction to IBC & IRC Wall Bracing Requirements
 - Specifying Hebel Autoclaved Aerated Concrete (AAC)
- **Committed to Sustainability**
 - Understand the LEED certification process & have a LEED AP on staff
 - Proficient at Chain of Custody – FSC Certified warehouses
 - “Green” products available county wide – limits substitutes
- **Free FASTSuite Software**
 - FASTBeam: Beam Sizing software
 - FASTPlan Cad & Design: integrates with FASTBeam to lay out framing for floor and roof plans



www.BlueLinxCo.com/Specifiers

Whole House Software Demo



1. Built on AutoCad® Architecture's platform – software possesses parametric, **3D MODEL** capabilities.
2. **"LIVE SECTIONS"** allow 3D building at any time during the drawing process.
3. **INTEGRATED DESIGN** that includes load tracking and beam & joist analysis.
4. Software will automatically generate **MATERIAL SCHEDULES** and priced quotes for structural products.
5. Available in **SPRING 2010**.

Go to www.BlueLinxCo.com/Specifiers to sign up to get more information on the release of Whole House Software

Put BlueLinx to Work for You...

- **Check out the Specifier page on the BlueLinx Web site**
 - More information on our FASTSuite software
 - Green Product information & product certifications
 - Links to Vendor pages that offer AIA classes and specifier specific information
 - Sign up for details on the Whole House Software Launch

www.BlueLinxCo.com/Specifiers

- **Contact us to sign up for one of our AIA classes or to receive our free FASTSuite Software**
 - Please call Karen Taylor at 770-221-2660

Closing

- We are committed to expanding our relationship with the Specifier community
- We value your input and feedback on how we can serve you better – please visit www.BlueLinxCo.com/Specifiers
- We look forward to working with you in the future

Thank you!

From all of us at

BlueLinx

